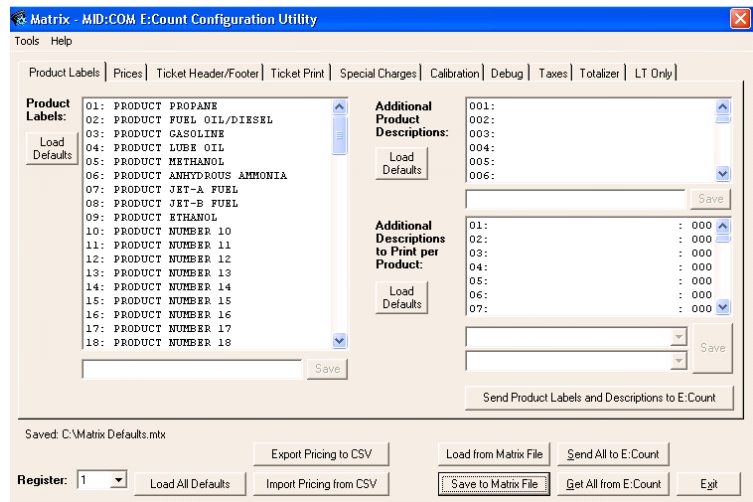


MID:COM Matrix

E:Count Configuration Utility User's Guide

Reference for Using the MID:COM Matrix E:Count
Configuration Utility



Midwest Computer Register, Corp.
1605 170th Street
Hampton, IA 50441

Telephone: 641-456-4848
Fax: 641-456-4600
E-Mail: Sales@MidComCorp.com
Web: www.MidComCorp.com

MID:COM THE ONE THAT WORKS!

This page is intentionally blank.

TABLE OF CONTENTS

TABLE OF CONTENTS.....	3
TABLE OF FIGURES.....	4
Contact Information.....	6
System Requirements.....	7
1.0.0 Installation.....	8
Install Step 1 - Launch install.	8
Install Step 2 - Extracting Files.	8
Install Step 3 - Welcome Screen.	9
Install Step 4 - License Agreement.	9
Install Step 5 - Destination Folder.	10
Install Step 6 - System Modification Summary.	10
Install Step 7 - Install Finished.	11
2.0.0 Operation.....	12
2.1.0 MID:COM Matrix Main Screen.....	13
2.2.0 Menus.....	15
2.2.1 - Tools Menu.....	15
2.2.3 - Help Menu.....	16
2.3.0 Tabs.....	17
2.2.1 Product Labels Tab.....	17
2.3.2 Product Pricing Tab.....	19
2.3.3 Ticket Header and Footer Tab.....	21
2.3.4 Ticket Configuration Tab.....	23
2.3.5 Special Charges Tab.....	25
2.3.5 Calibration Tab.....	27
MultiPoint Calibration Functions.....	30
Edit MPC.....	30
Send MPC.....	30
Get MPC.....	30
3.0.0 E:Count Serial Communication.....	33
4.0.0 Print Data.....	35
4.1.0 Print Preview.....	35
5.0.0 E:Count Reference.....	36
6.0.0 Initial Standalone E:Count Settings.....	38
7.0.0 Upgrading E:Count Software and Settings.....	40
8.0.0 Import and Export CSV Files.....	42
INDEX.....	49
VERSION HISTORY.....	51

TABLE OF FIGURES

Figure 1.	Matrix Installation File on the Windows Desktop.....	8
Figure 2.	Matrix Install Progress Bar.....	8
Figure 3.	Matrix Install Welcome Screen.....	9
Figure 4.	Matrix Install License Agreement.....	9
Figure 5.	Matrix Install Destination Folder.....	10
Figure 6.	Matrix Install System Modification Summary.....	10
Figure 7.	Matrix Install Finished.....	11
Figure 8.	Midcom Matrix Shortcut on the Windows Desktop.....	12
Figure 9.	Matrix Main Screen.....	12
Figure 10.	Sections of the Matrix Main Screen.....	13
Figure 11.	Commands.....	14
Figure 12.	Tools Menu.....	15
Figure 13.	Help Menu.....	16
Figure 14.	Product Labels Tab.....	17
Figure 15.	Product Pricing Tab.....	19
Figure 16.	Ticket Header and Footer Tab.....	21
Figure 17.	Ticket Configuration Tab.....	23
Figure 18.	Special Charges Tab.....	25
Figure 19.	Calibration Tab.....	27
Figure 20.	MultiPoint Calibration Factor Data Entry and Edit Form.....	30
Figure 21.	Taxes Tab.....	31
Figure 22.	Register Selection.....	33
Figure 23.	Options.....	34
Figure 24.	Print Preview.....	35
Figure 25.	E:Count LCD and Keyboard Layout.....	36
Figure 26.	CSV Import/Export Fields.....	43
Figure 27.	Product Labels Tab for CSV File.....	44
Figure 28.	Prices Tab for CSV File.....	45
Figure 29.	Special Charges Tab for CSV File.....	47
Figure 30.	CSV File in Excel 2010.....	48
Figure 31.	CSV File in Text Editor.....	48
Figure 32.	CSV File in Excel 2003.....	48

Trademarks

MID:COM *E:Count* and MID:COM *Matrix* and *their integrated software and hardware components* are trademarks of Midwest Computer Register Corp. (MID:COM). *Microsoft, MS, and MS-DOS* are registered trademarks, *Windows* is a trademark of Microsoft Corporation. Other brand and product names mentioned in this publication are trademarks or registered trademarks of their respective holders.

Copyright Notice

ECount Matrix Users Guide E180 v1.00.docx

© 2015 Midwest Computer Register, Corp. All rights reserved. Neither this publication nor any part of this publication may be copied, photocopied, reproduced, translated, or reduced to any electronic medium or machine readable form without the prior written permission of:

Midwest Computer Register, Corp.
1605 170th St.
PO Box 376 Hampton, Iowa 50441, USA
641-456-4848
www.midcomcorp.com
sales@midcomcorp.com

Disclaimer

Midwest Computer Register, Corp. provides this document and the software "as is" without any warranty of any kind, either expressed or implied; including but not limited to, the implied warranties of merchantability or fitness for a particular purpose.

Midwest Computer Register, Corp. reserves the right to make improvements and modifications to this document, and the products described in this document, at any time and without notice.

Midwest Computer Register, Corp. shall not be liable for any errors contained herein or for incidental and consequential damages in connection with the furnishings, performance, or use of this material.

Contact Information

You have several ways to interact with Midwest Computer Register, Corp. and its staff. If you have a suggestion you can email, write, or call us with the information below.

Email

Sales: sales@midcomcorp.com
Support: <http://www.midcomcorp.com/Contact.html>

Postal Address

MID:COM
1605 170th St
PO Box 376
Hampton, Iowa 50441

Phone Numbers

Phone: 641-456-4848
Fax: 641-456-4600

System Requirements

The recommended system configuration for the MID:COM E:Count Matrix is a computer running Microsoft Windows Xp® Professional with a 2.0 GHz processor and at least 128 megabytes (MB) of RAM. Below are the minimum requirements your computer needs to run the MID:COM E:Count Matrix.

Minimum Requirements	
Computer/Processor	Computer with Pentium 133 megahertz (MHz) or higher processor; Pentium III recommended
Memory	64 MB of RAM; other programs running simultaneously may require additional memory
Hard Disk	<p>Hard disk space requirements will vary depending on configuration; custom installation choices may require more or less. Listed below are the minimum hard disk requirements for MapPoint:</p> <ul style="list-style-type: none"> ▪ 25 megabytes for full configuration - recommended <p>Users without Windows XP, Windows 2000, Windows Me, or Office 2000 Service Release 1 (SR-1) require an extra 50 MB of hard disk space for System Files Update.</p>
Operating System	Windows 98, Windows 98 Second Edition, Windows Millennium Edition (Windows Me), Windows NT 4.0 with Service Pack 6 (SP6) or later, * Windows 2000, Windows XP, Windows Server 2003, or later
Drive	none
Display	XGA (1024x768) or higher-resolution monitor with 256 colors
Peripherals	Microsoft Mouse, Microsoft IntelliMouse®, or compatible pointing device

* Systems running Windows NT 4.0 SP6 must have Microsoft Internet Explorer 4.01 SP1 or later.

1.0.0 Installation

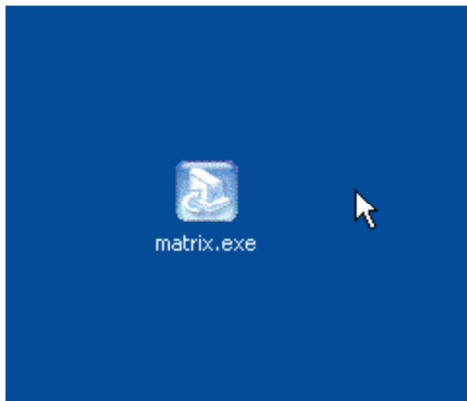


Figure 1. Matrix Installation File on the Windows Desktop

Install Step 1 - Launch install.

Locate and then double-click the **matrix.exe Matrix Installation Program**. This may be obtained from the MID:COM website or you may order a CD directly from MID:COM.

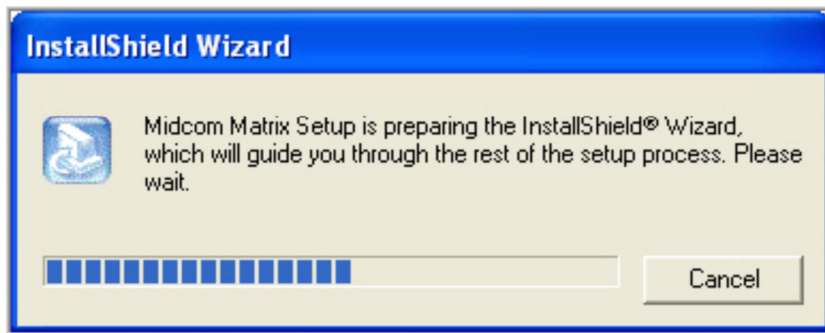


Figure 2. Matrix Install Progress Bar

Install Step 2 - Extracting Files.

The **Matrix Installation Program** will show a progress bar while extracting the files necessary for the installation to a temporary location on your computer.

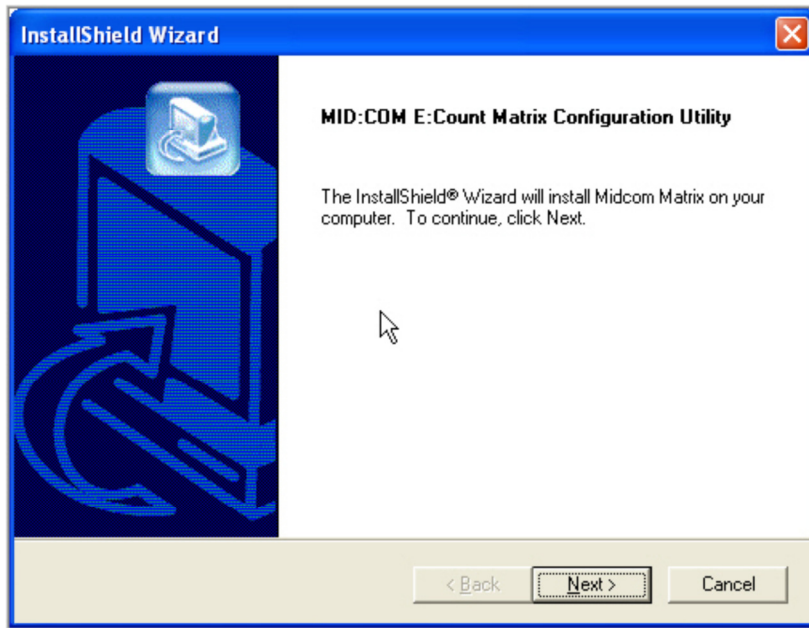


Figure 3. Matrix Install Welcome Screen

Install Step 3 - Welcome Screen.

After all files have been extracted click <Next> to continue.



Figure 4. Matrix Install License Agreement

Install Step 4 - License Agreement.

Accept the terms of the Midwest Computer Register Software End-user License Agreement in order to install the MID:COM software. Select <Yes> to accept the license and continue the install.

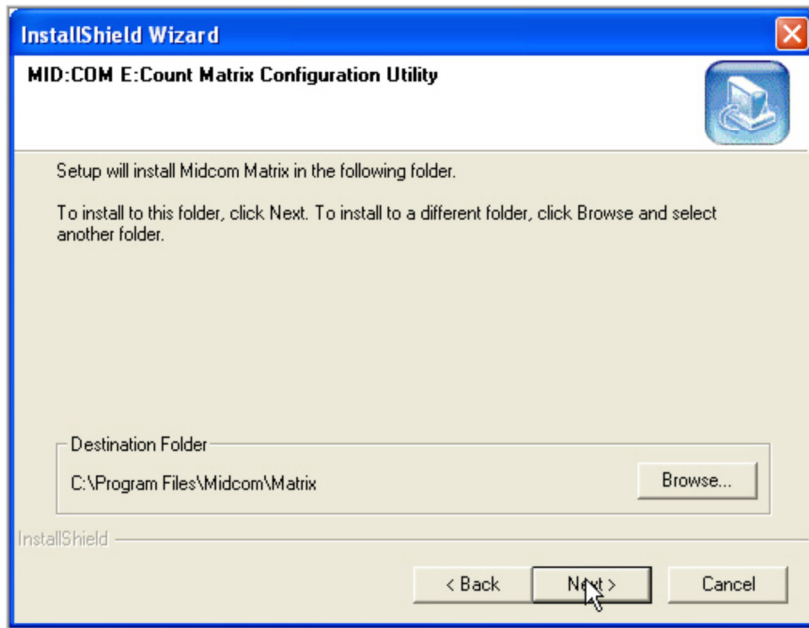


Figure 5. Matrix Install Destination Folder

Install Step 5 - Destination Folder.

The default installation folder should be acceptable for most users, select <Next> to continue.

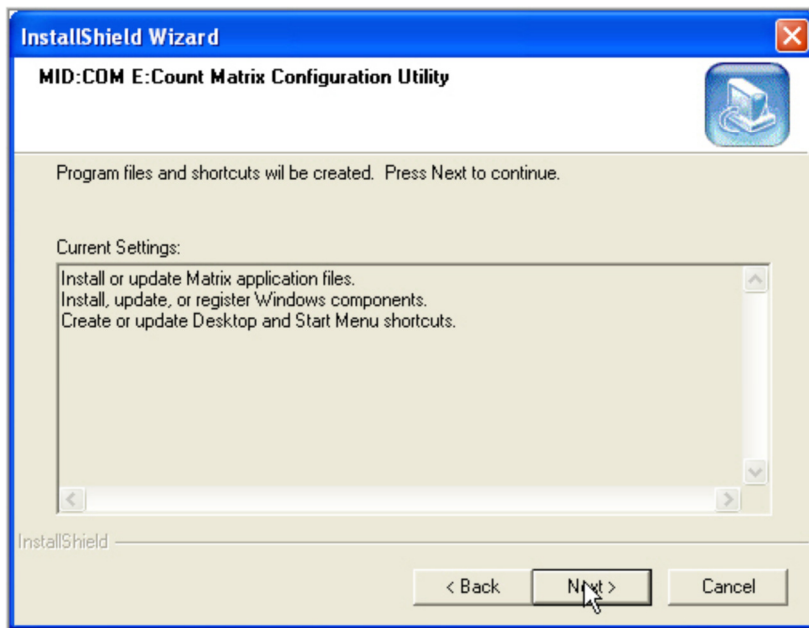


Figure 6. Matrix Install System Modification Summary

Install Step 6 - System Modification Summary.

A summary of the changes is displayed, select <Next> to begin installing files and configuring your system.

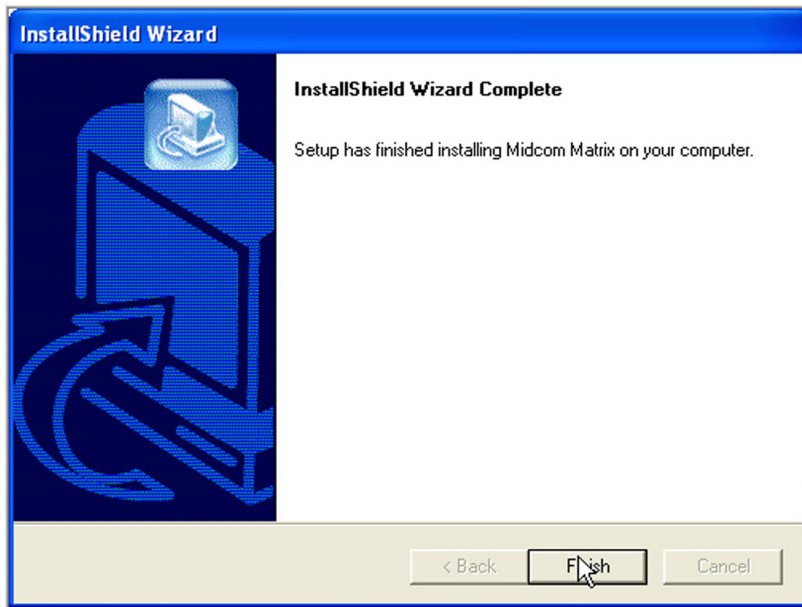


Figure 7. Matrix Install Finished

Install Step 7 - Install Finished.

After all necessary files have been installed, select <Finish> to complete the installation.

2.0.0 Operation

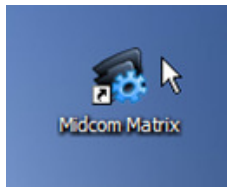


Figure 8. Midcom Matrix Shortcut on the Windows Desktop

To start the Matrix application double-click the **Midcom Matrix** shortcut on the desktop.

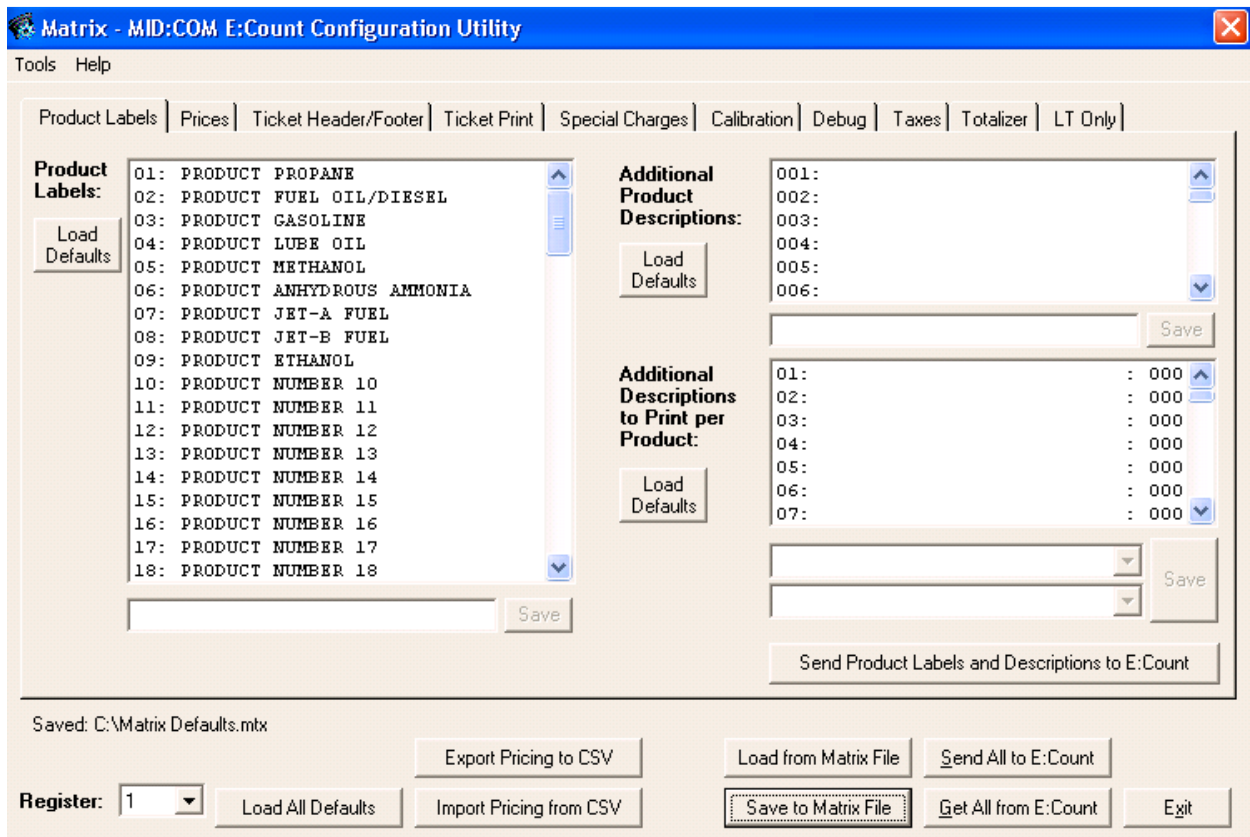


Figure 9. Matrix Main Screen

The opening screen will display the default Product Label Configuration and there will be no Register selected.

2.1.0 MID:COM Matrix Main Screen

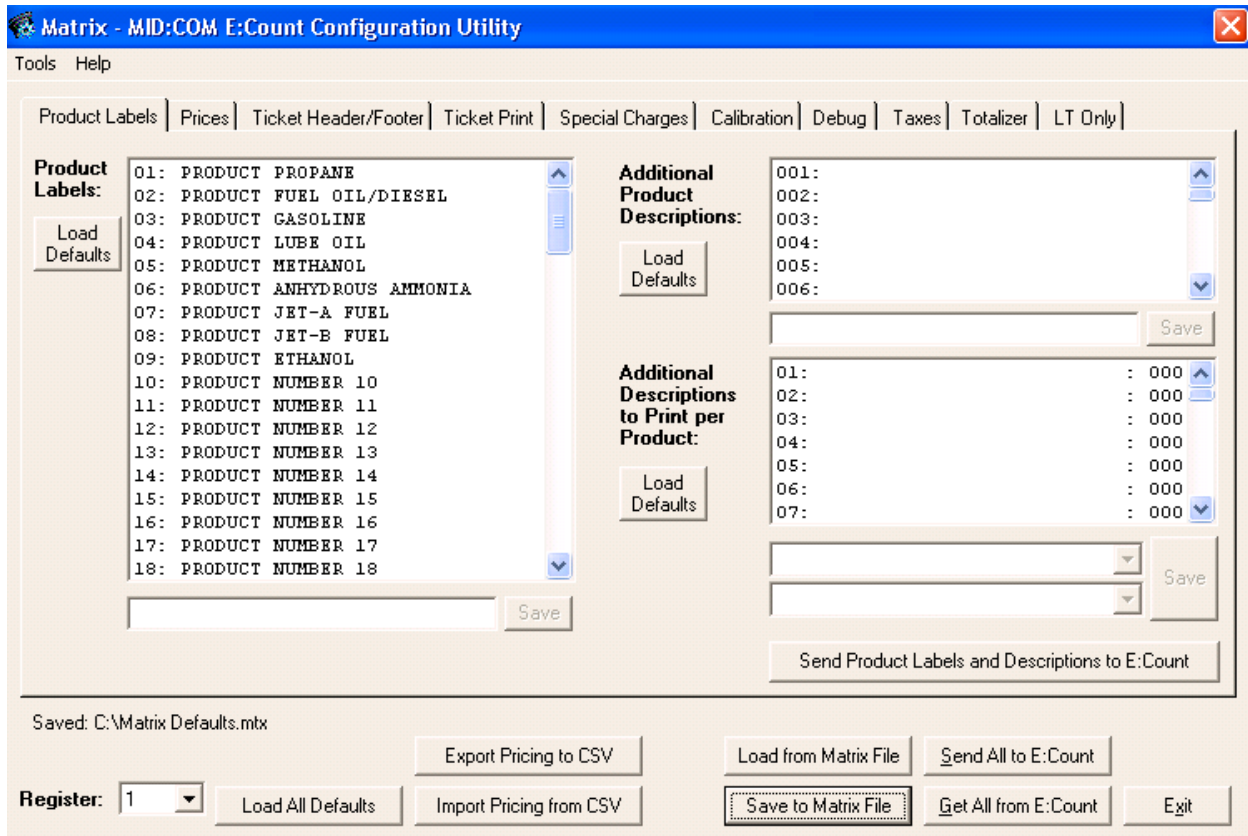


Figure 10. Sections of the Matrix Main Screen

Menus

Tools and Help: Selecting a Menu opens up a new screen with additional functions for the operator.

Tabs

Product Labels, Product Prices, Ticket Header and Footer, Ticket Configuration, Special Charges, Calibration Data, Debug, Taxes, Totalizer, and LT: Selecting a Tab displays information specific to that Tab and allows the operator to edit data for the E:Count on that Tab.

Commands

Register Selection, Load All Defaults, Export Pricing to CSV, Import Pricing from CSV, Load from File, Save to File, Get All from E:Count, Send All to E:Count, and Exit: Each is a special command that may be used at any time.

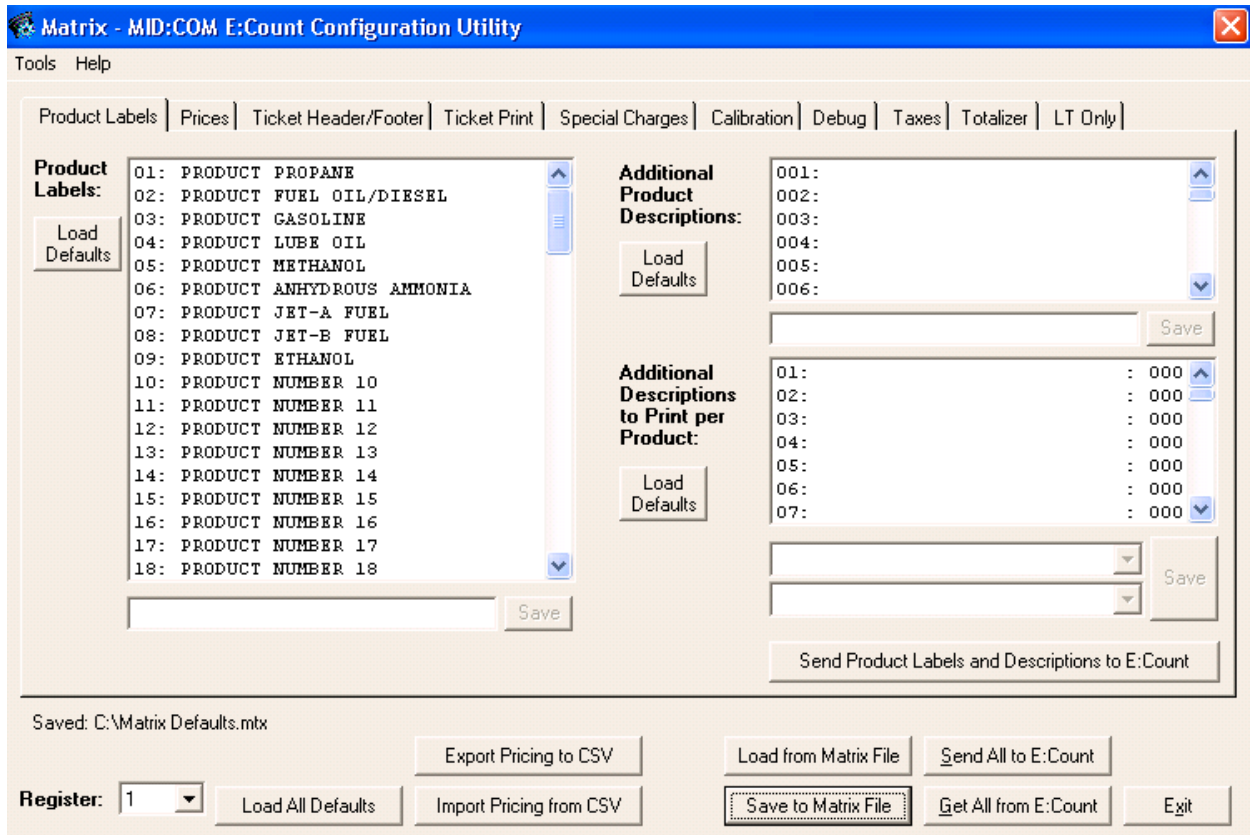


Figure 11. Commands

Register: Select Register 1 or Register 2.
 Load All Defaults: Clear all settings and load defaults.
 Import Pricing from CSV ..: Load all pricing from CSV file.
 Export Pricing to CSV ...: Create CSV file of pricing data.
 Load from Matrix File ...: Load all settings from a file.
 Save to Matrix File.....: Saves all current settings to a file.
 Get All from E:Count: Read all settings from an E:Count.
 Send All to E:Count: Send all settings to an E:Count.
 Exit: End the program, if changes have not
 been saved the operator will be
 prompted to save changes.

Note: The Calibration, Taxes, Totalizer, and LT labels must be sent separately.

2.2.0 Menus

2.2.1 - Tools Menu

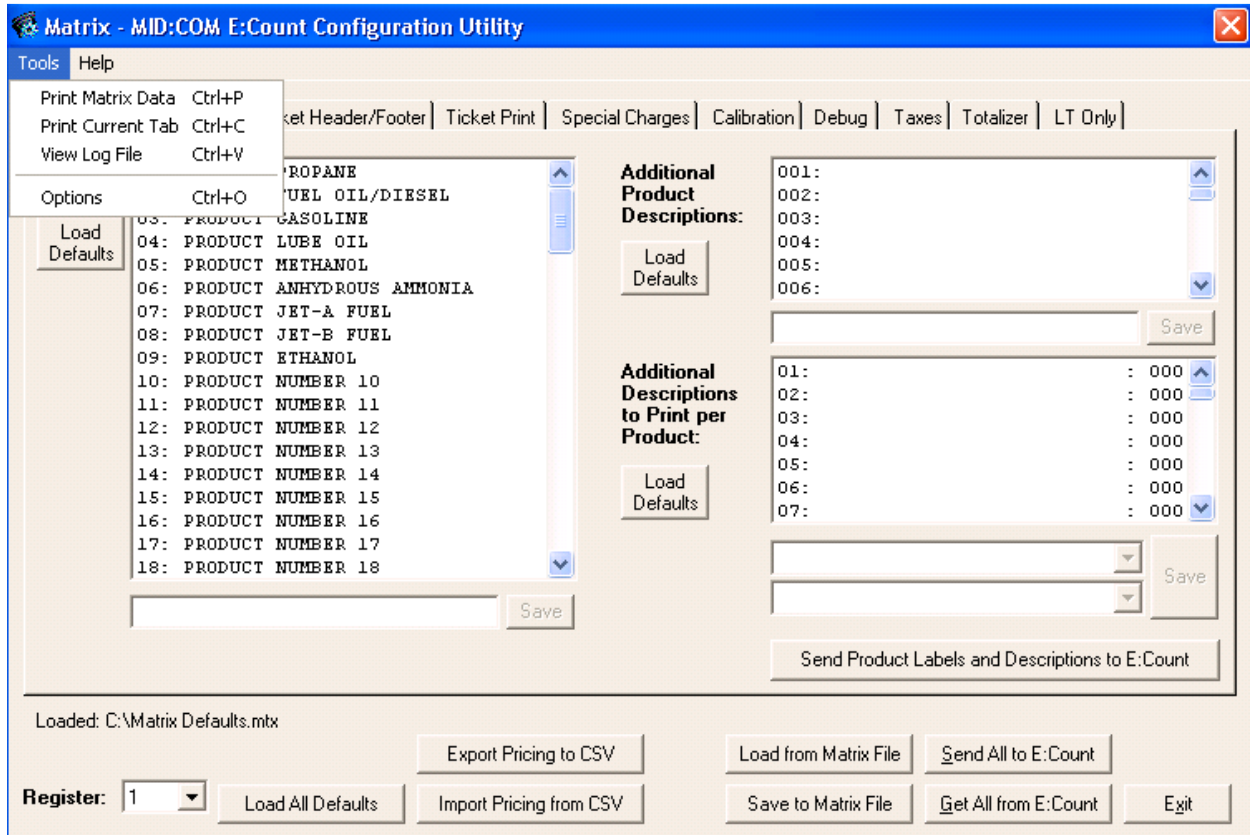


Figure 12. Tools Menu

Print Matrix Data: Print all settings.
Print Current Tab: Print settings on the Active Tab.
View Log File: Display the Matrix program log file.
Options: Display the Matrix Options screen.

2.2.3 - Help Menu

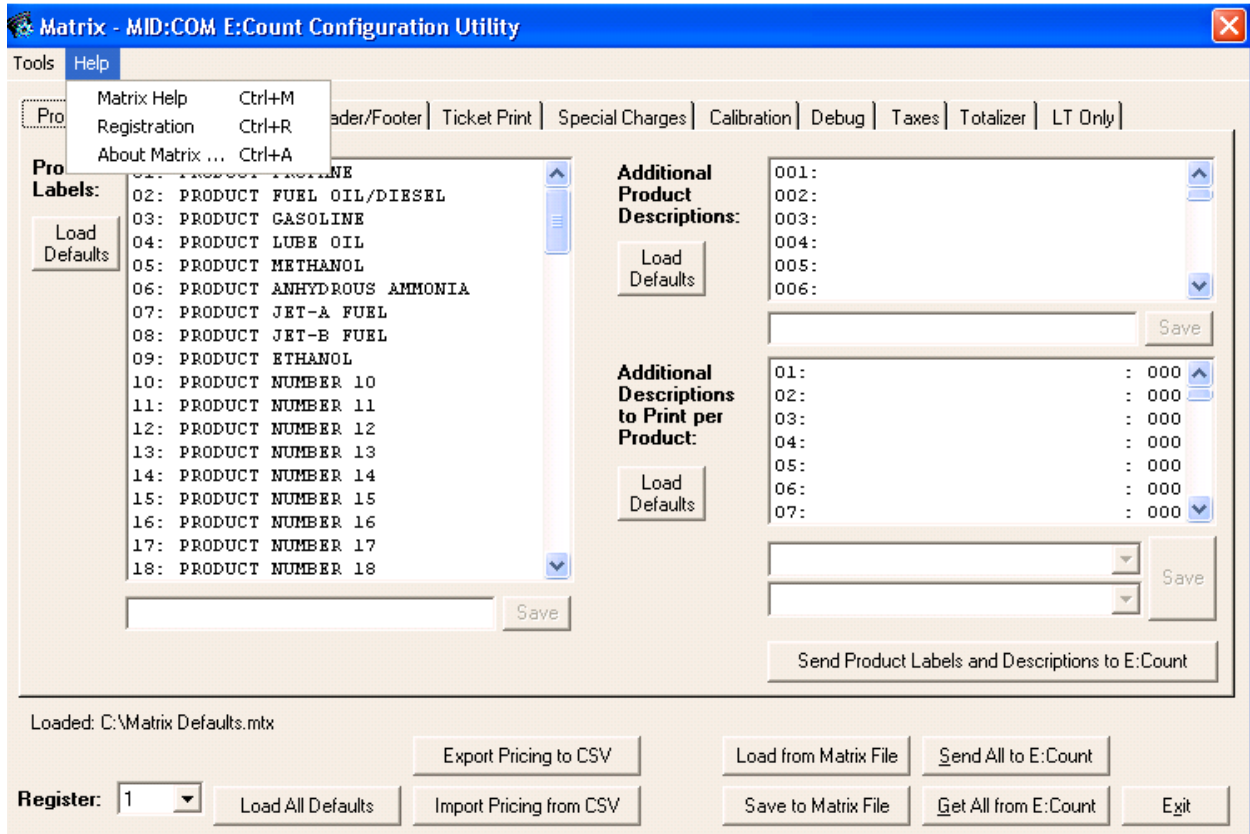


Figure 13. Help Menu

Matrix Help: Display the Matrix Help file.
Registration: Display the Registration screen.
About Matrix: Display the Matrix About screen.

2.3.0 Tabs

2.2.1 Product Labels Tab

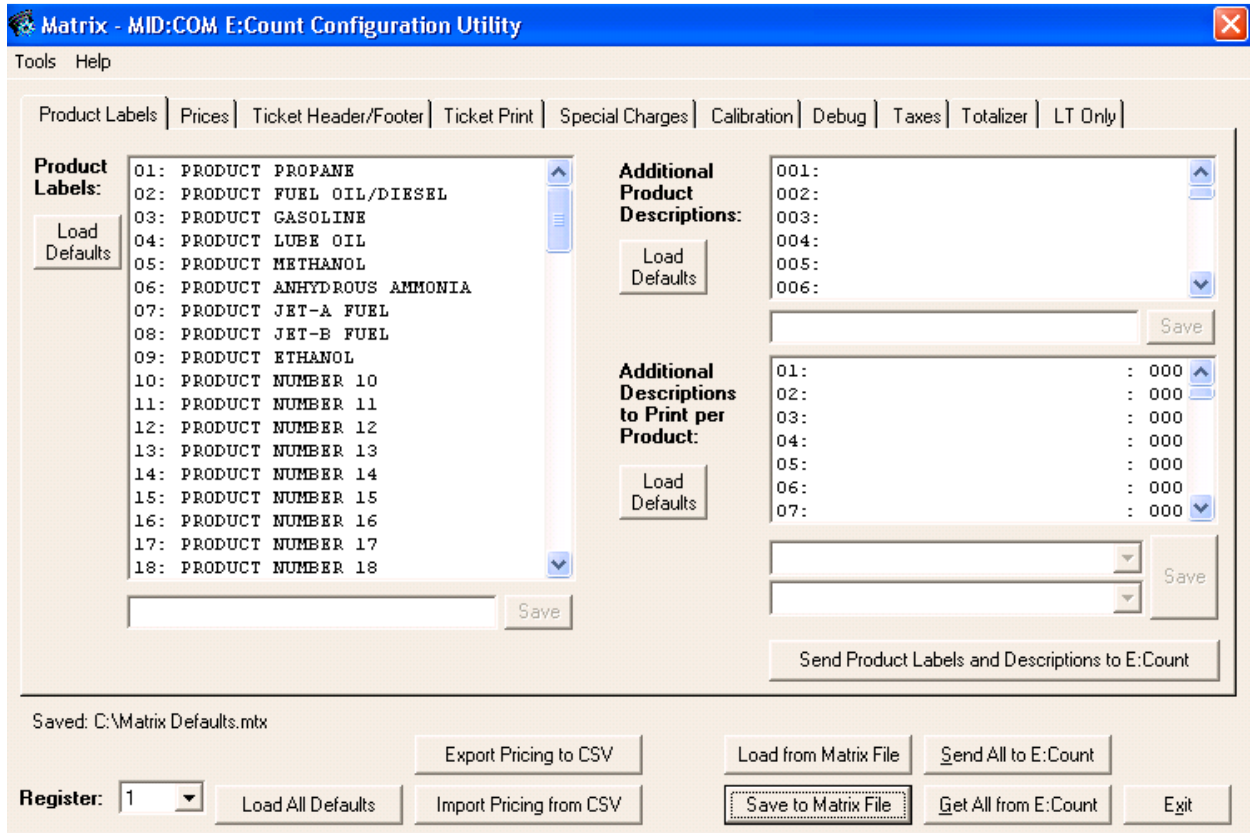


Figure 14. Product Labels Tab

Product Labels

To change the Product Label for a specific product, click the row for the desired Product Label. The editing field below the list will display the Product Label and allow the user to change the label. Select <Save> to save the Product Label.

Additional Product Descriptions

Up to 100 Additional Product Description Lines are available. To change a specific Additional Product Description Line, click the row of the desired Additional Product Description. The editing field below the list will display the Additional Product Description and allow the user to change the Product Description. Select <Save> when editing is complete.

The product Description fields allow additional information to be displayed on a per-product basis.

Additional Product Description to Print per Product

To specify which Product Description(s) should be printed on the ticket for a particular product, if any, click the row corresponding to the desired product.

In the "Start Line" combo box below the list select the Initial Product Description to print, or select {none} to indicate that no Extra Description should print for that product.

In the "End Line" combo box below the list select the Final Product Description to print, or select {none} to indicate that no Extra Description should print for that product.

All lines between and including the "Initial Line" and the "Final Line" will be printed on every delivery ticket meter block where that particular product is delivered.

Select <Save> to save the Additional Product Description(s) for the selected product.

Send Product Labels to E:Count

When the desired Product Labels and Product Descriptions have been configured and are ready to be sent to the E:Count, select the *Send Product Labels to E:Count* button. The E:Count must be powered up and the serial cable must be connected from the Power Control Module (PCM) to the computer running the Matrix. A progress bar will display the status of the transmission of the Product Labels. When the progress bar reaches 100% the transmission is complete.

Load Defaults - Product Labels and Product Descriptions

To reset the Product Labels, Product Descriptions, or Selected Product Descriptions to the default values and erase all changes for all products select the appropriate Load Defaults button. If the existing settings have not been saved a prompt will appear and allow the current settings to be saved.

2.3.2 Product Pricing Tab

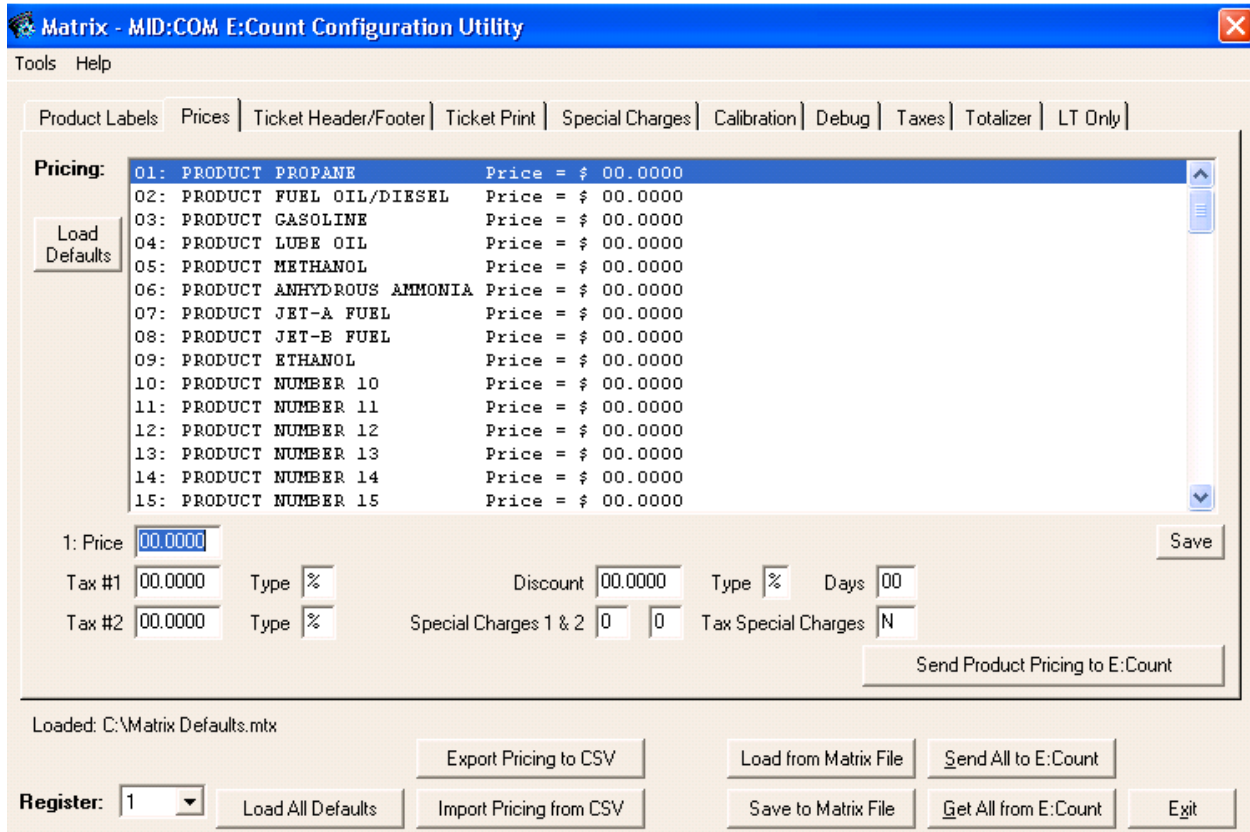


Figure 15. Product Pricing Tab

Product Pricing

To change the Price, Tax Rates, Tax Types, Discount, and Special Charges for a specific product click the row for the desired product number, the editing fields below the list will display the Product Pricing data and allow the user to modify them. Select <Save> to save the Product Pricing data.

Send Product Pricing to E:Count

When the desired Product Pricing has been configured and is ready to be sent to the E:Count, select the *Send Product Pricing to E:Count* button. The E:Count must be powered up and the serial cable must be connected from the Power Control Module (PCM) to the computer running the Matrix. A progress bar will display the status of the transmission of the Product Pricing. When the progress bar reaches 100% the transmission is complete.

Load Defaults - Product Pricing

To reset the Product Pricing to the default values and erase all changes for all products select the Load Defaults button. If the existing settings have not been saved a prompt will appear and allow the current settings to be saved.

Product Pricing Fields

Price : A value from 00.0000 to 99.9999.
Tax #1, #2 :
Discount :

Tax Type : Either % or \$:
Discount Type : \$ calculates per unit volume,
: % calculates on the amount.

Special Charge : 0, 1-9:
: 0 indicates no Special Charge is to be applied
: 1-9 is the index of the Special Charge
: (see Special Charges)

Discount Days : 00-99:
: The number of Discount Days printed on the
: ticket. The number of days the customer is
: allowed to pay the invoice and subtract the
: discount amount.

Tax Special : Y/N:
Charges : Whether or not the special charges are subject
: to the same taxes as the Product.

2.3.3 Ticket Header and Footer Tab

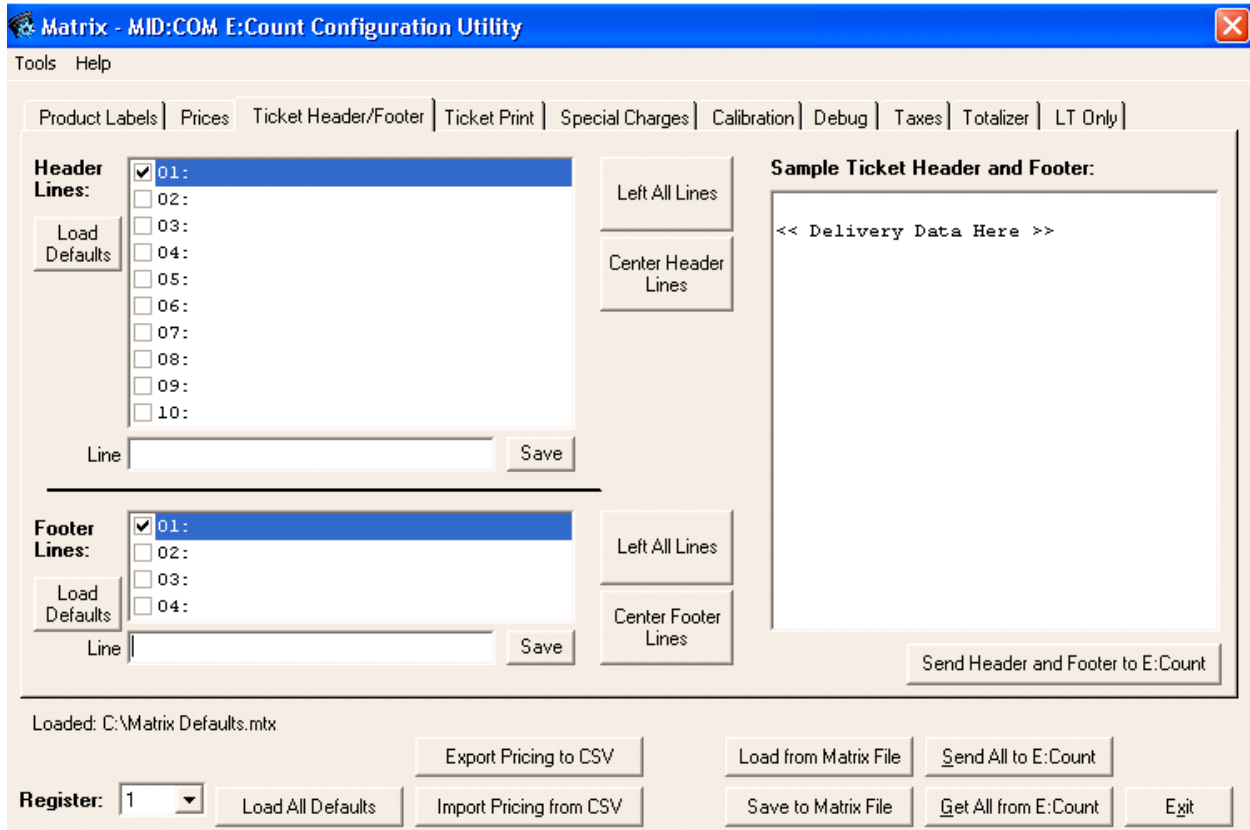


Figure 16. Ticket Header and Footer Tab

Ticket Header and Footer

Click the row corresponding to a line to be changed. The editing field below the list will display the Ticket Header or Ticket Footer line and allow the user to modify it. Select <Save> to save the Ticket Header or Ticket Footer line.

To indicate the line should be printed make sure the checkbox next to the line is checked. To indicate a line should not be printed clear the checkbox for that line.

A blank line in either the Header or the Footer will be printed if the checkbox next to the line is selected and there is no text on the line.

Sample Ticket Header and Footer

The sample will always reflect what the current Ticket Header and Ticket Footer will look like when the delivery ticket printed. The Ticket Configuration Tab will also be updated.

Send Header and Footer to E:Count

When the desired Ticket Header and Ticket Footer have been configured and are ready to be sent to the E:Count, select the *Send Header and Footer to E:Count* button. The E:Count must be powered up and the serial cable must be connected from the Power Control Module (PCM) to the computer running the Matrix. A progress bar will display the status of the transmission of the Ticket Header and Ticket Footer. When the progress bar reaches 100% the transmission is complete.

Load Defaults - Ticket Header and Footer

To remove all Ticket Header and Ticket Footer lines and reset the Ticket Header and Ticket Footer to the default (blank) values, select Load Defaults for the desired Ticket section. If the existing settings have not been saved a prompt will appear and allow the current settings to be saved.

2.3.4 Ticket Configuration Tab

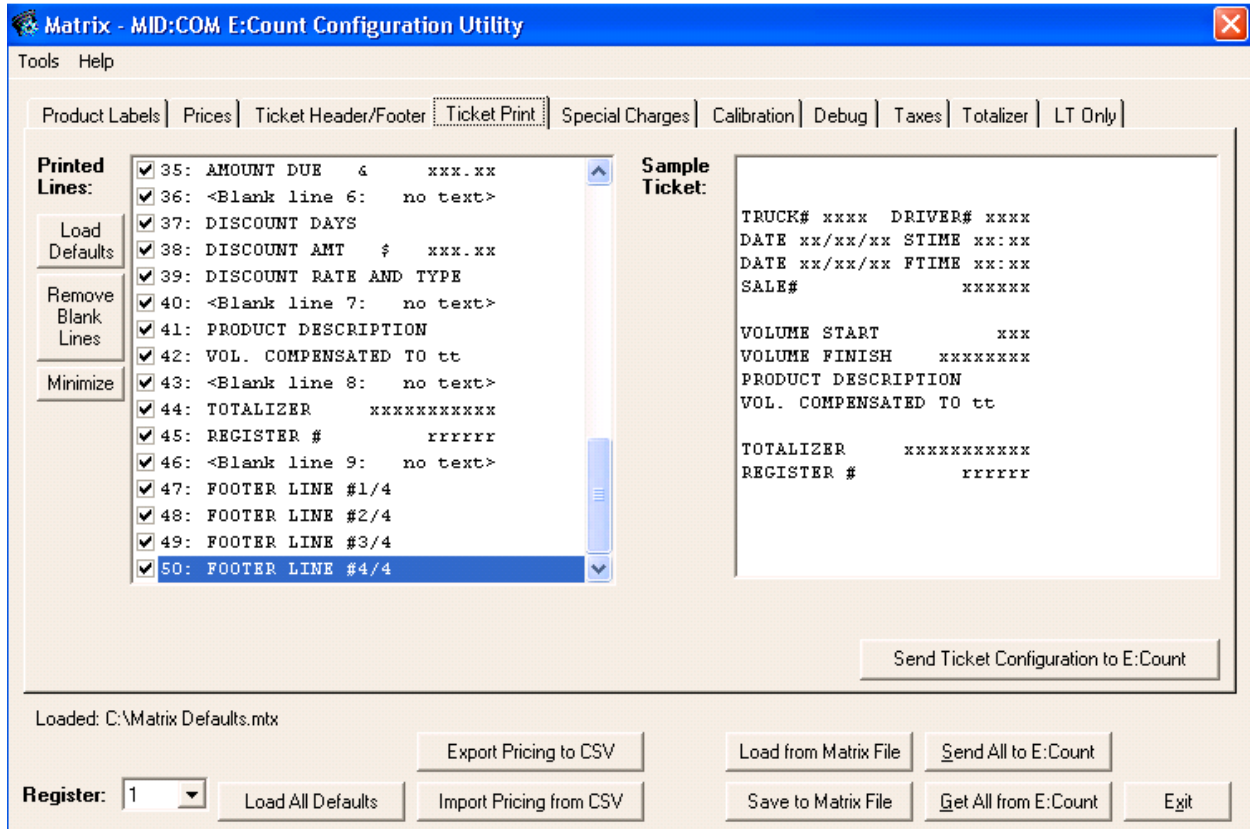


Figure 17. Ticket Configuration Tab

Printed Lines

There are multiple sections of data printed on the Delivery Ticket:

1. Ticket Header
2. Meter Time Block
3. Product Pricing
4. Meter Product Block
5. Ticket Footer

The lines that print on the ticket depend on the Product Calibration settings, on the Product Pricing settings, on the configuration of the Ticket Header and the Ticket Footer, and also on the setting of user-configurable lines.

To remove a line from the ticket or add a line back to the ticket, click on the checkbox to the left of the line to be removed. If the check box remains checked the line you have selected is unable to be removed.

Sample Ticket

When the Ticket Configuration, Ticket Header, Ticket Footer, or Product Pricing are modified the Sample Ticket will be updated to reflect how the ticket will print.

If any Product Pricing value is changed from the default values all Product Pricing lines will be displayed on the Sample Ticket.

Send Ticket Configuration to E:Count

When the desired Ticket Configuration has been configured and is ready to be sent to the E:Count, select the *Send Ticket Configuration to E:Count* button. The E:Count must be powered up and the serial cable must be connected from the Power Control Module (PCM) to the computer running the Matrix. A progress bar will display the status of the transmission of the Ticket Configuration. When the progress bar reaches 100% the transmission is complete.

Load Defaults - Ticket Configuration

To reset the Ticket Configuration to the default (all lines printed) select the Load Defaults button. If the existing settings have not been saved a prompt will appear and allow the current settings to be saved.

Remove Blank Lines

To remove all blank lines from the Ticket Configuration while leaving all lines containing text intact, select Remove Blank Lines. The Sample Ticket will be updated to reflect the change in the Ticket Configuration. If the existing settings have not been saved a prompt will appear and allow the current settings to be saved.

Minimize

To remove all lines that are not required from the Ticket Configuration, select Minimize. The Sample Ticket will be updated to reflect the current Ticket Configuration. If the existing settings have not been saved a prompt will appear and allow the current settings to be saved.

2.3.5 Special Charges Tab

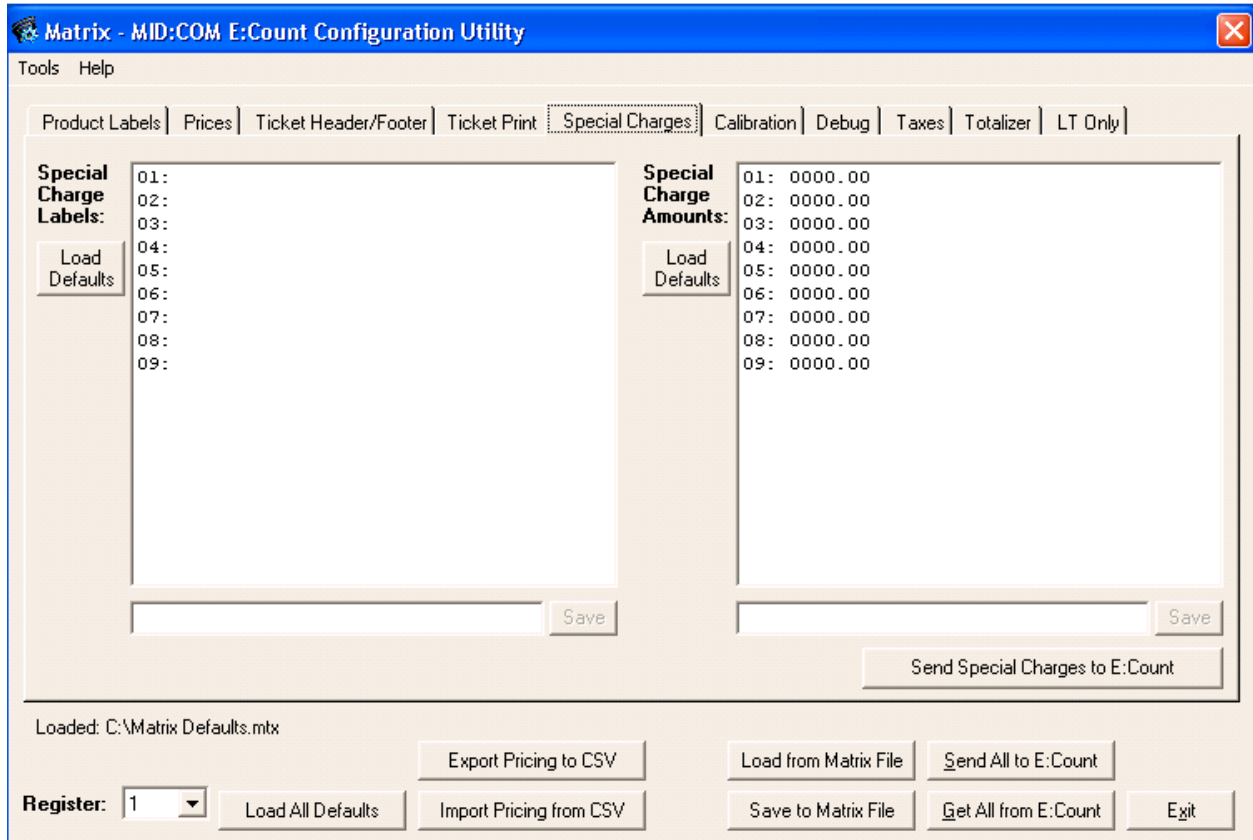


Figure 18. Special Charges Tab

Special Charge Labels

To change the Special Charge Label for a specific Special Charge, click the row for the desired Special Charge. The editing field below the list will display the Special Charge Label and allow the user to change the label. Select <Save> to save the Special Charge Label.

Special Charge Amounts

To change the Special Charge Amount for a specific Special Charge, click the row for the desired Special Charge. The editing field below the list will display the Special Charge Amount and allow the user to change the amount. Select <Save> to save the Special Charge Amount.

The Special Charge Amounts are not editable at the time of delivery. The Special Charge Amount(s) will be added to each Delivery Ticket when the Delivery Product includes Pricing and has been configured for one or two Special Charges.

The specific Special Charge to include for each product is configured on the Product Pricing tab.

Send Special Charges to E:Count

When the desired Special Charges have been configured and are ready to be sent to the E:Count, select the *Send Special Charges to E:Count* button. The E:Count must be powered up and the serial cable must be connected from the Power Control Module (PCM) to the computer running the Matrix. A progress bar will display the status of the transmission of the Special Charges. When the progress bar reaches 100% the transmission is complete.

Load Defaults - Special Charges and Special Charge Labels

To reset the Special Charges to the default values and erase all changes select the appropriate Load Defaults button. If the existing settings have not been saved a prompt will appear and allow the current settings to be saved.

2.3.5 Calibration Tab

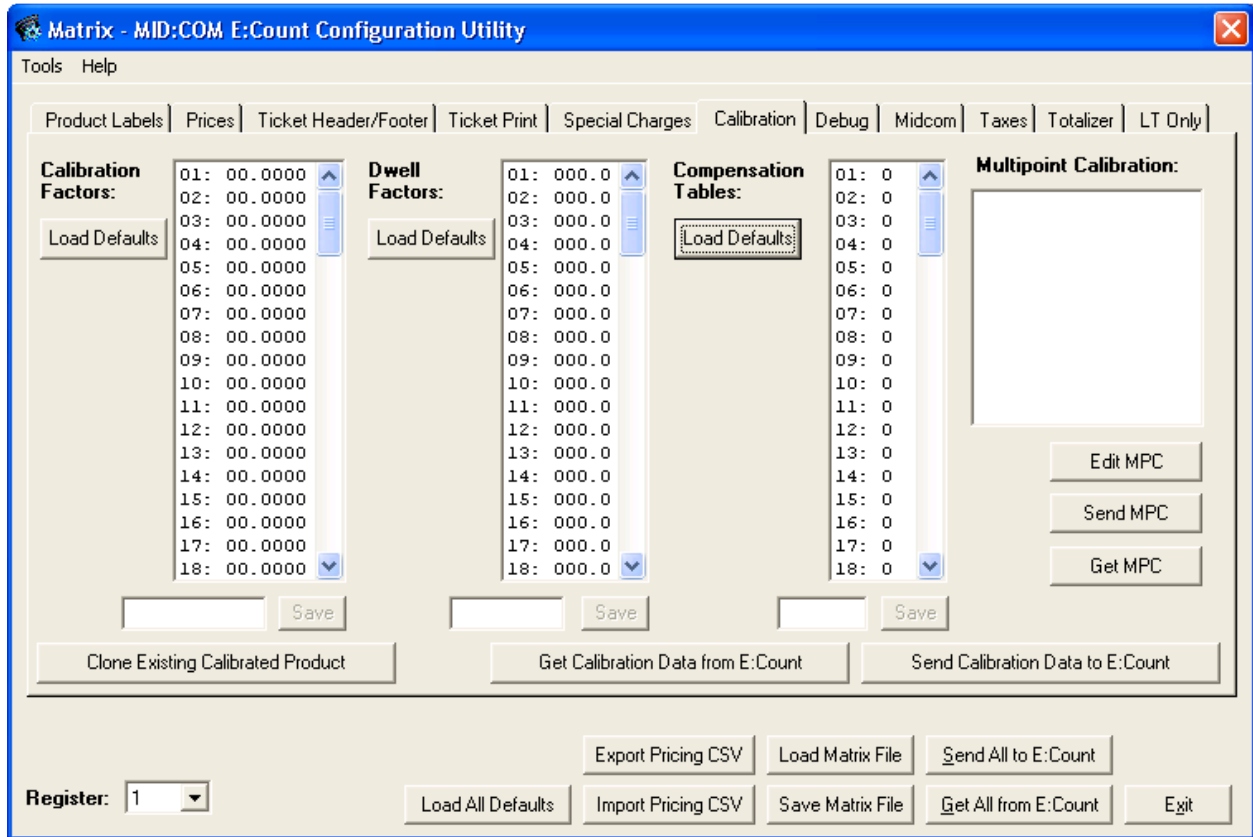


Figure 19. Calibration Tab

Calibration Factors

In order for a product to be valid and to be deliverable by the E:Count the desired product must have a valid Calibration Factor.

To change the Calibration Factor for a specific Product, click the row for the desired Calibration Factor. The editing field below the list will display the Calibration Factor and allow the user to change the factor. Select <Save> to save the Calibration Factor.

Valid Calibration Factors are from 0.0001 to 1.9999. During the Calibration process the Prover will provide the actual Calibration Factor that should be used for the product being proved.

Dwell Factors

To change the Dwell Factor for a specific Product, click the row for the desired Dwell Factor. The editing field below the list will display the Dwell Factor and allow the user to change the factor. Select <Save> to save the Dwell Factor.

Compensation Tables

To change the Compensation Table for a specific Product, click the row for the desired Compensation Table. The editing field below the list will display the Compensation Table and allow the user to change the table number. Select <Save> to save the Compensation Table.

Set the Compensation Table value to the corresponding built-in table value of the actual product being delivered:

<u>Compensation Table #</u>	<u>Description</u>
00	UNCOMPENSATED
01	PROPANE
02	DIESEL/HEATING OIL
03	GASOLINE
04	LUBE OIL
05	METHANOL
06*	ANHYDROUS AMMONIA (E179 and older)
06*	AVIATION GASOLINE (E180 and newer)
07	JET-A FUEL
08	JET-B FUEL
09	ETHANOL

Note: If a product is *not* to be temperature compensated the Compensation Table should be 0 (uncompensated).

Load Defaults - Calibration Factor, Dwell Factor, Compensation Table

To reset the Calibration Factors, Dwell Factors, or Compensation Tables to the default values and erase all changes select the appropriate Load Defaults button. If the existing settings have not been saved a prompt will appear and allow the current settings to be saved.

(continued)

Get Calibration Data from E:Count

The desired Calibration Factors, Dwell Factors, and Compensation Tables may be retrieved from the E:Count and saved on a computer. To retrieve the Calibration Data from the E:Count, select the *Get Calibration Data from the E:Count* button. The E:Count must be powered up and the serial cable must be connected from the Power Control Module (PCM) to the computer running the Matrix. A progress bar will display the status of the transmission of the Calibration Data. When the progress bar reaches 100% the transmission is complete.

Send Calibration Data from E:Count

When the desired Calibration Factors, Dwell Factors, and Compensation Tables have been configured and are ready to be sent to the E:Count, select the *Send Calibration Data to E:Count* button. The E:Count must be powered up and the serial cable must be connected from the Power Control Module (PCM) to the computer running the Matrix. A progress bar will display the status of the transmission of the Calibration Data. When the progress bar reaches 100% the transmission is complete.

Note: In order to send Calibration Data to the E:Count the Calibration Bolt must have first been loosened and then tightened; after doing so the Calibration Data may be sent to the E:Count until the next time the E:Count is shut down. This prevents Calibration Data from being overwritten unless the meter and register are being calibrated during the Proving process. If the operator attempts to send Calibration Data to the E:Count without the Calibration Bolt having been loosened and then tightened the operator will get an error in the Matrix Software as shown below.

(continued)

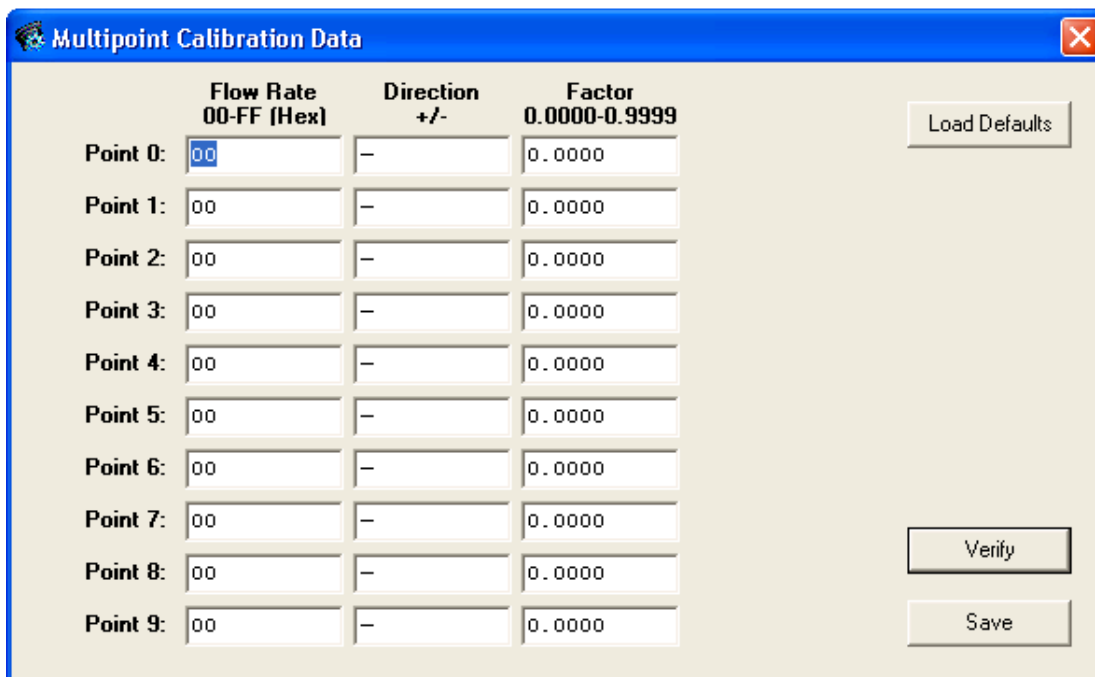
MultiPoint Calibration Functions

The MultiPoint Calibration data is only valid for those versions that support Multipoint Calibration, M173, E180+ and L415+.

For more information on MultiPoint Calibration refer to the MultiPoint Calibration Manual for the ECount MCR-05 and ECount LT MCR-09.

Edit MPC

Display the MultiPoint Calibration Factor Data Entry and Edit Form to allow the entry and editing of MPC data.



	Flow Rate 00-FF (Hex)	Direction +/-	Factor 0.0000-0.9999
Point 0:	00	-	0.0000
Point 1:	00	-	0.0000
Point 2:	00	-	0.0000
Point 3:	00	-	0.0000
Point 4:	00	-	0.0000
Point 5:	00	-	0.0000
Point 6:	00	-	0.0000
Point 7:	00	-	0.0000
Point 8:	00	-	0.0000
Point 9:	00	-	0.0000

Figure 20. MultiPoint Calibration Factor Data Entry and Edit Form

Send MPC

Send the MultiPoint Calibration Factors to the ECount. The Calibration Bolt must have been both loosened and tightened prior to sending the MPC Data to the register similar to the regular Calibration Data.

Get MPC

Get the existing MultiPoint Calibration Factors from the ECount.

2.3.6 Taxes Tab

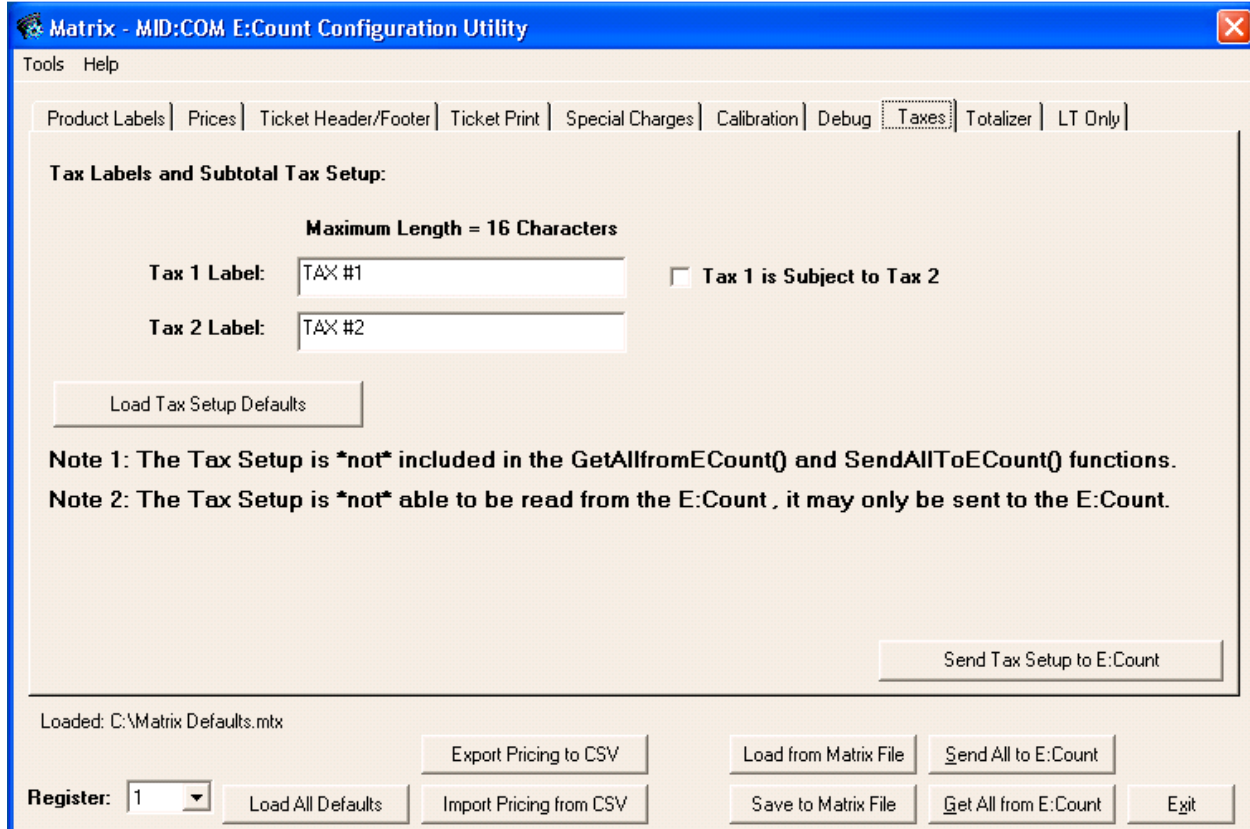


Figure 21. Taxes Tab

Tax Labels

The Default Tax Labels for all products for Tax 1 and Tax 2 are as follows:

Tax 1: TAX #1
Tax 2: TAX #2

To change the Tax Label for either tax, select and edit the text as desired. The labels are hard-coded to be upper-case.

Subtotal Tax

If Tax 2 is a Subtotal Tax, or if "Tax 1 is Subject to Tax 2" check the check box labeled "Tax 1 is Subject to Tax 2". The calculation of Tax 2 will include the value of Tax 1 in addition to all other values being taxed. Select <Save> to save the Calibration Factor.

As indicated, these values are "Write Only" and are not included in the "Get All" or "Send All" operations.

Load Defaults - Tax Labels and Subtotal Tax

To reset the Tax Labels and Subtotal Tax to the default values and erase all changes select the Load Tax Setup Defaults button. If the existing settings have not been saved a prompt will appear and allow the current settings to be saved.

Send Tax Setup to E:Count

To send the new Tax Labels and the Subtotal Tax setting to the E:Count select "Send Tax Setup to E:Count". The existing values in the E:Count will be over-written with the displayed values.

3.0.0 E:Count Serial Communication

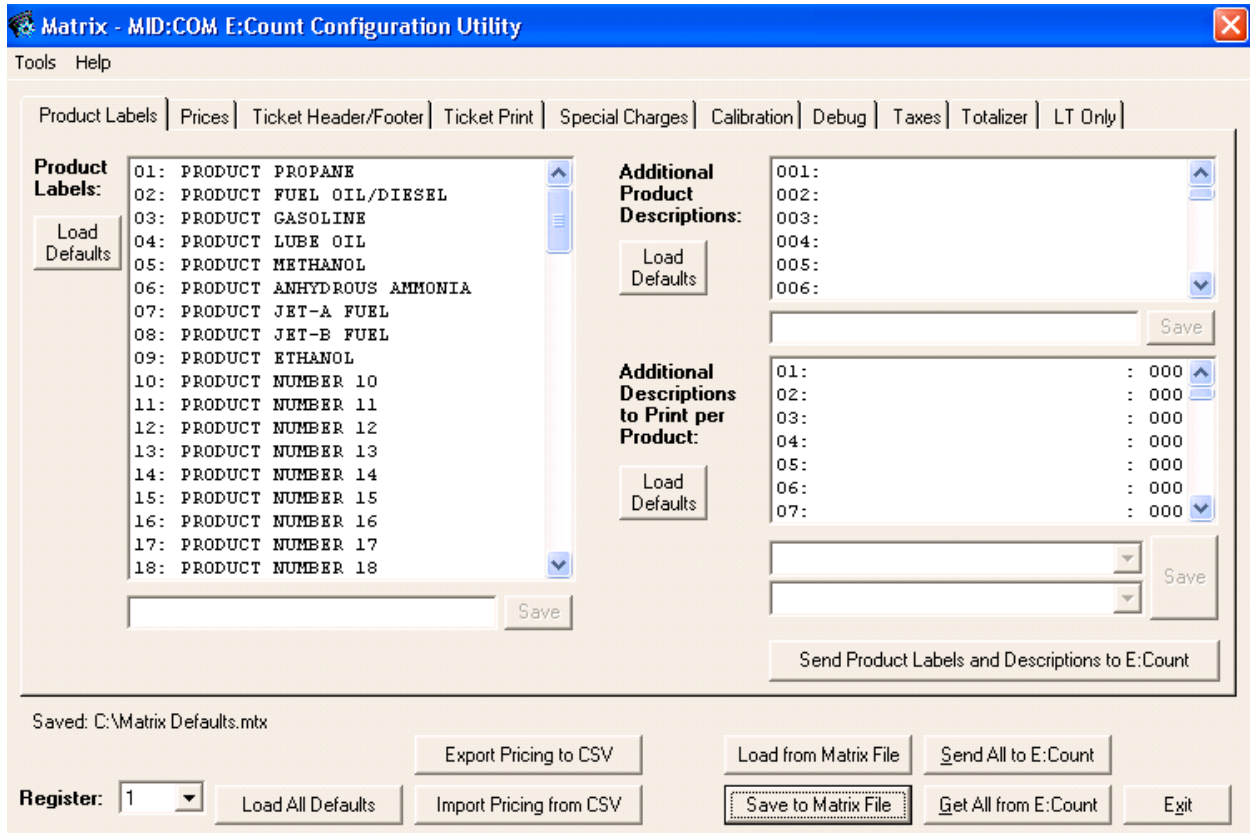


Figure 22. Register Selection

Register Selection

In order to communicate with an E:Count via a serial cable, the Matrix Software must know which E:Count to communicate with.

Register 1 will be valid for most users. Register 2 is only valid in a dual register configuration with 2 registers connected to a single Power Control Module (PCM).

Changing the Register setting from Register 1 to Register 2 allows the operator to configure either of the E:Count registers on a vehicle.

The value of the Register setting will be saved and restored each time the program is run.

Options

On the main Matrix screen select the *Tools* Menu and then select *Options*.

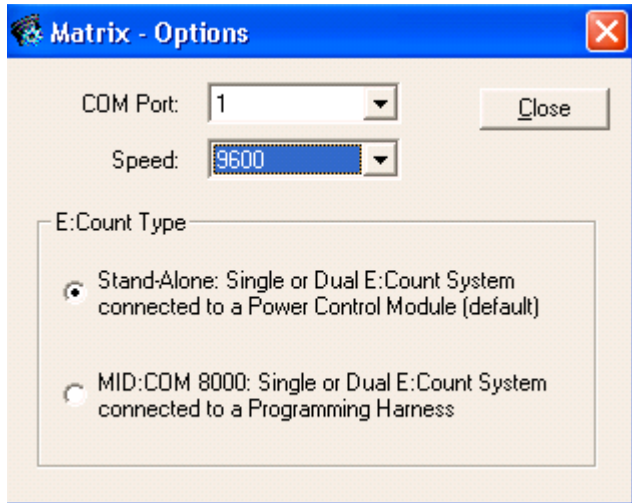


Figure 23. Options

COM Port and Baud Rate

Set the COM Port correctly and set the Baud Rate to 9600.

The E:Count Power Control Module (PCM) has a 9-pin female D-sub connector for serial communication interfacing with external devices labeled "Serial 1". It follows the RS-232 protocol. It is configured as a DCE device. It is set up to communicate using 9600,N,8,1. The communicating software must be set up the same, and must be set to NO hardware handshaking. It uses pins 2, 3, and 5, and requires a regular cross-over serial cable assembly to connect to DTE devices such as a P.C., laptop, or handheld.

4.0.0 Print Data

To view and print a list of settings, either all or just the current tab, select the *Data* menu then select *Print All Data* or *Print Active Tab*.

4.1.0 Print Preview

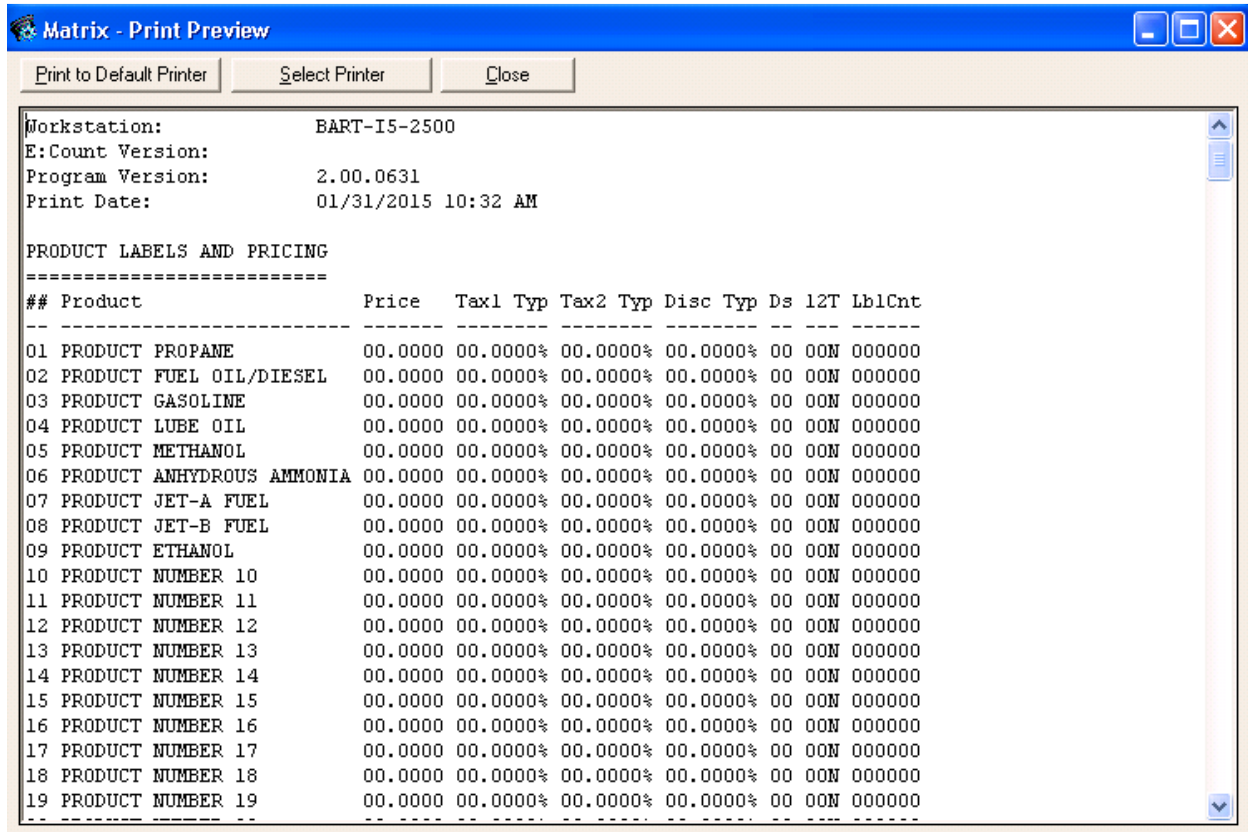


Figure 24. Print Preview

Print to Default Printer : Print the Settings to the Default Windows Printer.

Select Printer: Display the Printer Select dialog.

Close: Close the Print Preview Screen and return to the Matrix main screen.

5.0.0 E:Count Reference

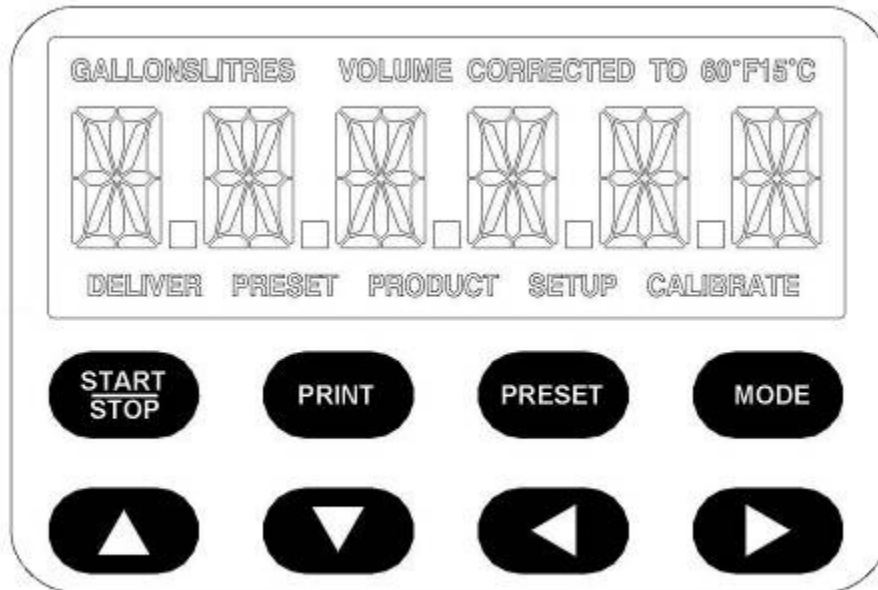


Figure 25. E:Count LCD and Keyboard Layout

GALLONSLITRES	'GALLONS' or 'LITRES' indicates the current Volume Mode (US or Metric).
VOLUME CORRECTED TO 60F15C	Displayed whenever the Temperature Compensation is active. '60F' in Gallons Mode, '15C' in Liters mode.
DELIVER	Indicates <u>Delivery Mode</u> is active and will display until the Fuel Delivery Ticket prints.
PRESET	Indicates the Preset Volume is being changed.
PRODUCT	Indicates the Product Code is being changed.
SETUP	Displayed in the <u>Delivery Menu</u> and the <u>Calibration Menu</u> .
CALIBRATE	Calibration Screw backed out. Displayed until Calibration Screw tightened.

Special Note on Keyboard Entry

The E:Count uses special technique called **PRESS & HOLD** for keyboard entry. This technique eases keyboard operation, especially when wearing gloves, in the absence of any audible or tactile feedback. Simply press a button and wait for the desired action.

Examples:

- For menus press & hold the mode key until the selection appears.
 - PRESS & HOLD **<START/STOP>** to enter that selection.
 - PRESS & HOLD **<START/STOP>** to exit the selection.
- To enter a number PRESS & HOLD the **<RIGHT>** or **<LEFT>** arrow keys to select the digit to be changed. To change the number PRESS & HOLD the **<UP>** or **<DOWN>** arrow.
- To start a delivery PRESS & HOLD **<START/STOP>**.
- To enter a preset PRESS & HOLD **<PRESET>**.

Pressing and releasing a button may give results but it is only coincidental that the button was held long enough.

6.0.0 Initial Standalone E:Count Settings

The Matrix cannot configure all settings in an E:Count. The following are the minimum recommended values that need to be configured at the E:Count prior to operation or further configuration with the Matrix software.

Step 1. Setup calibration menu values by loosening the Calibration Bolt and then pressing the Mode button. Most of the values will be set in the Matrix software, however the following need to be set at the E:Count:

Calibration Mode:

PRCODE - Current Product Code
CALFAC - Calibration Factor
ATOCAL - Auto-Calibration
MRATIO - Meter Ratio
CMPTBL - Compensation Table Number
SERIAL - Register Serial Number
TIMER - No Flow Timeout setting
REGNUM - Register Port Number
U TYPE - Unit Type, either Mass or Volume
UNITS - Units, either Gallons or Litres
PGROSS - Print Gross Volume setting
DECMAL - Decimal Settings
AIRSEN - Air Sensor Status
PROBE - RTD or Analog (RTD replaces Analog as of June 2007)

When finished replace the Calibration Bolt.

Step 2. Setup Delivery menu values by pressing the Mode button. The following need to be set at the E:Count:

DELIVERY MENU

DRIVER - Driver Number

Press Start/Stop to save the Driver Number and return to Delivery Mode.

Step 3. Enter Setup menu values by pressing the Mode button and then Start/Stop on SETUP followed by the Security Code. The following need to be set at the E:Count:

SETUP MENU

NEWCOD - Note the Existing Security Code
STAGE1 - Stage 1 Shutoff Value
STAGE2 - Stage 2 Dwell Value
SALE - Next Sale Number
TRUCK - System Truck Number
CURNCY - Currency Display setting
PRINTR - Printer Type
COPIES - Number of Thermal Printer Copies (if necessary)
HOSEPK - Enable Hose Packing (if necessary)

Press Start/Stop on Exit to return to Delivery Mode.

Step 4. If the Currency function is enabled, it is not necessary to enter currency values at the E:Count - the Matrix software will allow you to edit all Pricing values.

Step 5. The computer needs to be connected to Serial Port 1 (or the HOST Port) of the Power Control Module when running the Matrix Program. Run the Matrix and refer to the Matrix User's Guide for additional Information.

7.0.0 Upgrading E:Count Software and Settings

Step 1. Settings on each of the E:Count menus should be noted before upgrading an E:Count. Use the following worksheet to save those values. The items with an "*" in front of them are items that are able to be loaded through the Matrix program.

DELIVERY MENU

DRIVER - Driver Number

MONEY MENU (Each value must be recorded for each valid product)

* PRICE - Product Price
* TAX 1 - Tax 1 Rate
* TXTYP1 - Tax 1 Type
* TAX 2 - Tax 2 Rate
* TXTYP2 - Type
* TAXSUB - Subtotal Tax
* DISCNT - Discount Rate
* DSCTYP - Discount Type
* DSCDAY - Discount Days

SETUP MENU

NEWCOD - Note the Existing Security Code
STAGE1 - Stage 1 Shutoff Value
* STAGE2 - Stage 2 Dwell Value (per product)
SALE - Next Sale Number
TRUCK - System Truck Number
CURNCY - Currency Display setting
PRINTR - Printer Type
COPIES - Number of Thermal Printer Copies
HOSEPK - Enable Hose Packing (if necessary)

CALIBRATION MENU

PRCODE - Current Product Code
* CALFAC - Calibration Factor
MRATIO - Meter Ratio
* CMPTBL - Compensation Table Number
SERIAL - Register Serial Number
TIMER - No Flow Timeout setting
REGNUM - Register Port Number
U TYPE - Unit Type, either Mass or Volume
UNITS - Units, either Gallons or Litres
PGROSS - Print Gross Volume setting
DECMAL - Decimal Settings
AIRSEN - Air Sensor Status
PROBE - RTD or Analog (RTD replaces Analog as of June 2007)

Step 2. Replace the chip in the Power Control Module with the PCM_x chip provided by MID:COM (x is the version of the PCM software and may change).

Step 3. Hook up the programming wire harness (provided by MID:COM) to the outside 9 pin circular connector on the E:Count register head and the serial port on your laptop. Change the software in the E:Count register head to the current version (provided by MID:COM) by double clicking on the xxxx.BAT file (provided by MID:COM).

Step 4. The computer needs to be hooked to serial port 1 of the Power Control Module when running the Matrix Program. Run the Matrix and refer to the Matrix User's Guide for additional Information.

8.0.0 Import and Export CSV Files

The Matrix has a function that allows the Import and the Export of a comma-delimited text file (CSV) to be used with an external spreadsheet application to update/modify pricing fields (Excel).

REQUIREMENTS

- There are 18 required fields in each record of the CSV File.
- All 18 fields are required for every record.
- The fields within each record must be comma-delimited.
- The fields themselves must contain no commas, neither in the amounts nor the text.
- There are 100 records in the CSV file, 1 Header Record and 99 Product Records.
- All 100 records are required.
- Record #1 is the Header Record; the Header will contain the name of each field in all caps with no spaces.
- The Header record must start with "PRODUCTCODE" and must end with "THISFIXESEXCEL".
- The Product records must start with the number 1-99 in the first field and must end with "DO_NOT_CHANGE" in the last field.
- All text in the file will be converted to upper-case.
- All of the text in the records must be valid printable ASCII characters.
- The records in the file need to be terminated with CRLF characters, these will be the only characters that are not printable but are required to separate records.

The data in each field will be format-checked and range-checked, however it is still possible that errors may happen during the import.

Contact MID:COM for assistance with importing CSV files.

Field Name	# Records	Format	Tab
PRODUCTCODE	99	2 digits, 01-99	*
DESCRIPTION	99	25 ASCII characters	Product Labels
PRICE	99	00.0000 to 99.9999	Prices
TAX1RATE	99	00.0000 to 99.9999	Prices
TAX1TYPE	99	1 character, % or \$	Prices
TAX2RATE	99	00.0000 to 99.9999	Prices
TAX2TYPE	99	1 character, % or \$	Prices
DISCOUNTRATE	99	00.0000 to 99.9999	Prices
DISCOUNTTYPE	99	1 character, % or \$	Prices
DISCOUNTDAYS	99	2 digits, 00-99	Prices
FEE1INDEX	99	1 digit, 0-9	Prices
FEE2INDEX	99	1 digit, 0-9	Prices
FEESTAXABLE	99	1 character, Y or N	Prices
EXTRALABELSTART	99	3 digits, 000-100	Product Labels
EXTRALABELCOUNT	99	3 digits, 000-100	Product Labels
THISFEEAMOUNT	9**	00.0000 to 99.9999	Special Charge
THISEXTRALABEL	99	25 ASCII characters	Product Labels
THISFIXESEXCEL	99	DO_NOT_CHANGE	***

Figure 26. CSV Import/Export Fields

* The ECount has 99 Product Codes, 01-99. The PRODUCTCODE field is included in the CSV file format in order to clarify which Product Code the fields in that record apply to.

** There are only 9 Fee Amounts available, as a result only the first 9 rows will have an amount in the THISFEEAMOUNT (field #16). Records 10-99 will have "DO NOT USE" in THISFEEAMOUNT. Any values in THISFEEAMOUNT for records 10-99 will be ignored.

*** Excel has a known issue regarding inconsistent behavior when saving CSV files if the last cell in a block of 16 rows is empty. To prevent this there is an 18th field at the end of each record that must not be blank. This field is called "THISFIXESEXCEL" and must contain "DO_NOT_CHANGE" in all product records.

Microsoft Knowledgebase Article ID: 77295

<http://support2.microsoft.com/kb/77295/en-us#appliedto>

Excel saves text files in 16-row blocks. Therefore, if all the cells in the last column in a 16-row block are empty, Excel saves that area as if the column does not exist. No tabs or commas are saved for that 16-row block.

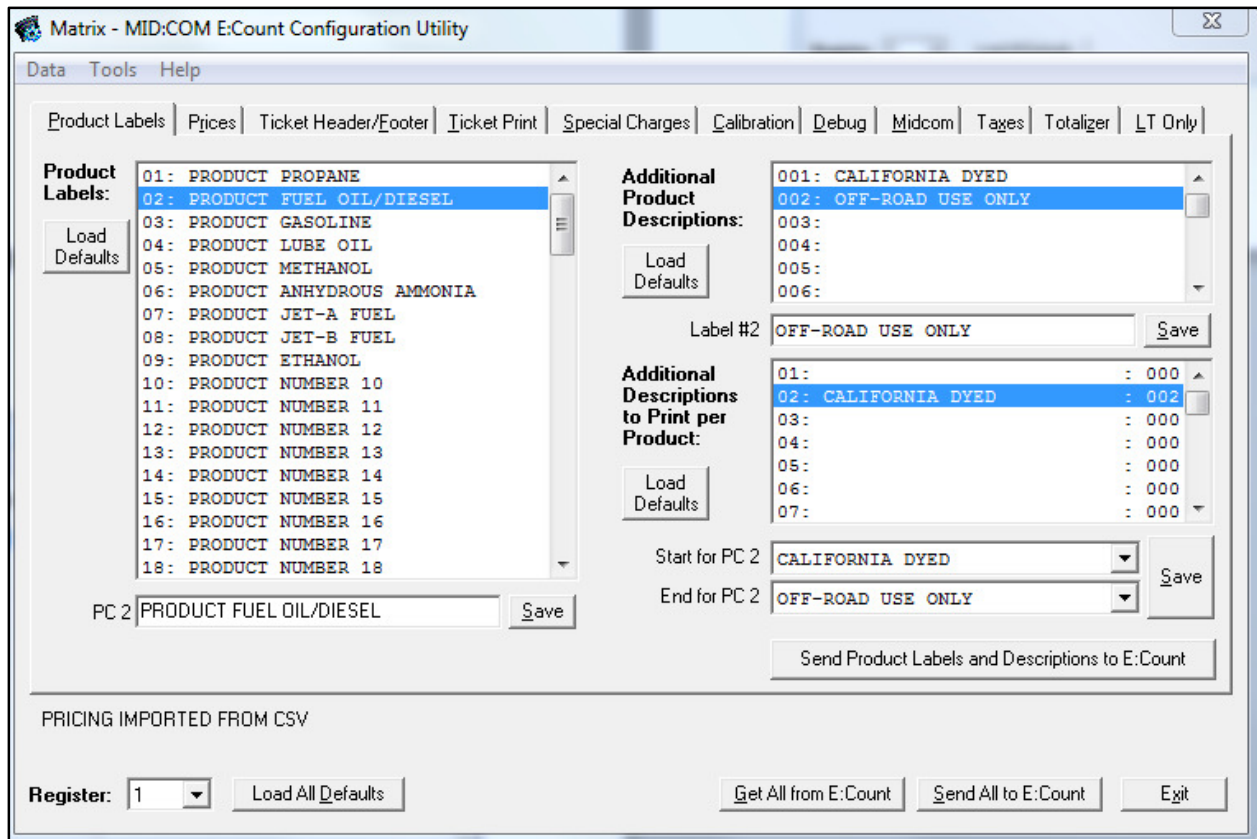


Figure 27. Product Labels Tab for CSV File

DESCRIPTION

25 Characters, Printed on delivery tickets

EXTRALABELSTART

Index from 1-100 of the First Additional Product Description to Print, 0 = no additional product descriptions will print.

EXTRALABELCOUNT

Count of Additional Product Descriptions to print, starting at the First Additional Product Description to Print and counting up. Start Index + Count must be less than or equal to 100.

THIS EXTRALABEL

There are 100 Additional Product Description Lines, but only Descriptions 1-99 will be imported or exported. This is done in order to maintain uniform record layouts for all of the Product Records in the CSV file. The 100th Description will be blank after exporting but may be edited directly in the Matrix

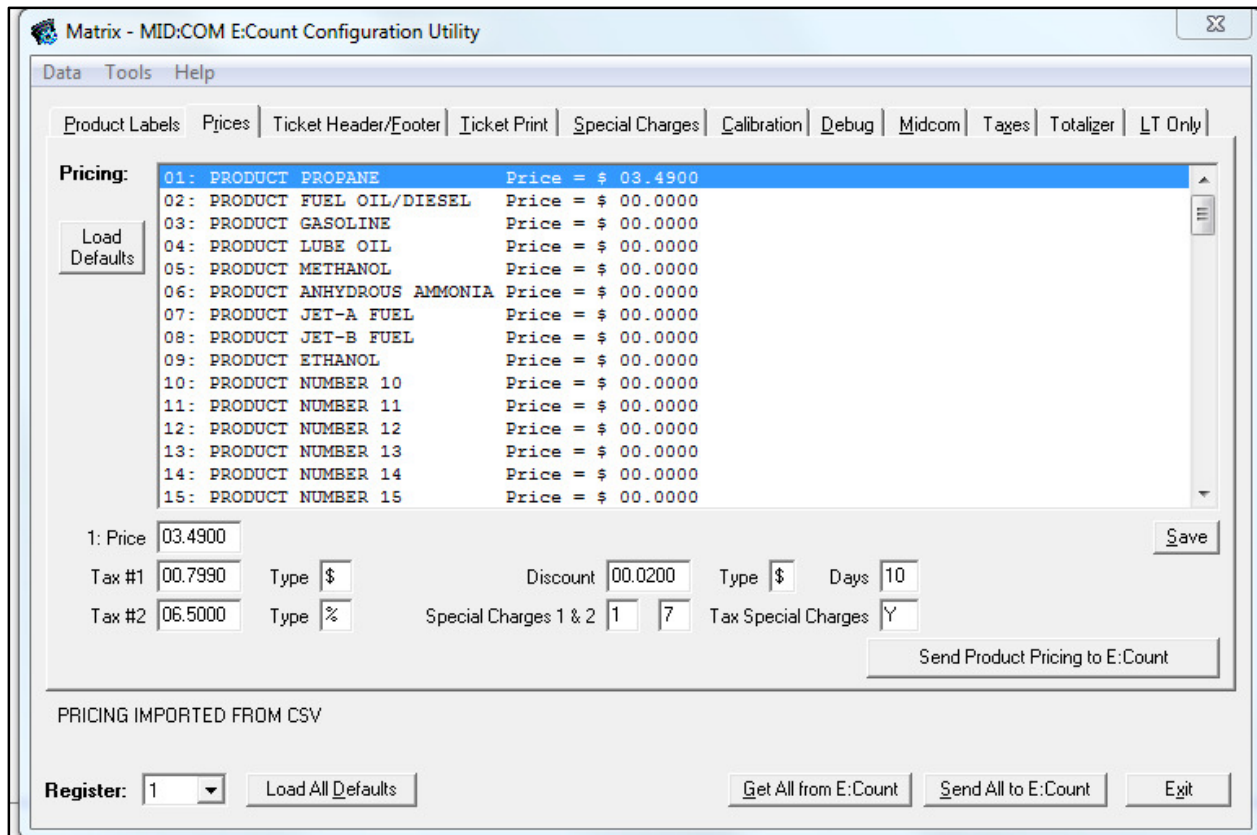


Figure 28. Prices Tab for CSV File

PRICE

Numeric Price per unit Volume/Mass, from 0.0000 to 99.9999.

TAX1RATE, TAX2RATE, DISCOUNTRATE

Numeric Tax/Discount Rate, from 0.0000 to 99.9999.

TAX1TYPE, TAX2TYPE, DISCOUNTTYPE

Sales Tax %, Excise Tax \$/unit, or Discount % or \$/unit.

Must be \$ or %.

07.5000%	= 7.5%	\$100	x 7.5%	= \$7.5
07.5000\$	= \$7.50/unit	100GL	x \$7.50	= \$750 ***
00.0750%	= 0.075%	\$100	x 0.075%	= \$0.075 ***
00.0750\$	= \$0.075/unit	100GL	x \$0.075	= \$7.50 ***

DISCOUNTDAYS

Number of days to Pay for the Quick Pay Discount, calculated printed on delivery ticket, must be from 00-99

(continued)

PRICES TAB (continued)

FEE1, FEE2

Index of Fee (or Special Charge) to be added to total cost on delivery ticket, from 1-9, or 0 if no Fee. Refers to the Special Charges Tab for the Fee Amount and Fee Description for a particular Fee. Must be from 0-9.

FEESTAXABLE

Indicates whether or not the fee(s) should have the taxes applied. Y indicates the Fees are Subject to the same taxes as the product, while N indicates the Fees are not subject to any tax. Must be a Y or an N.

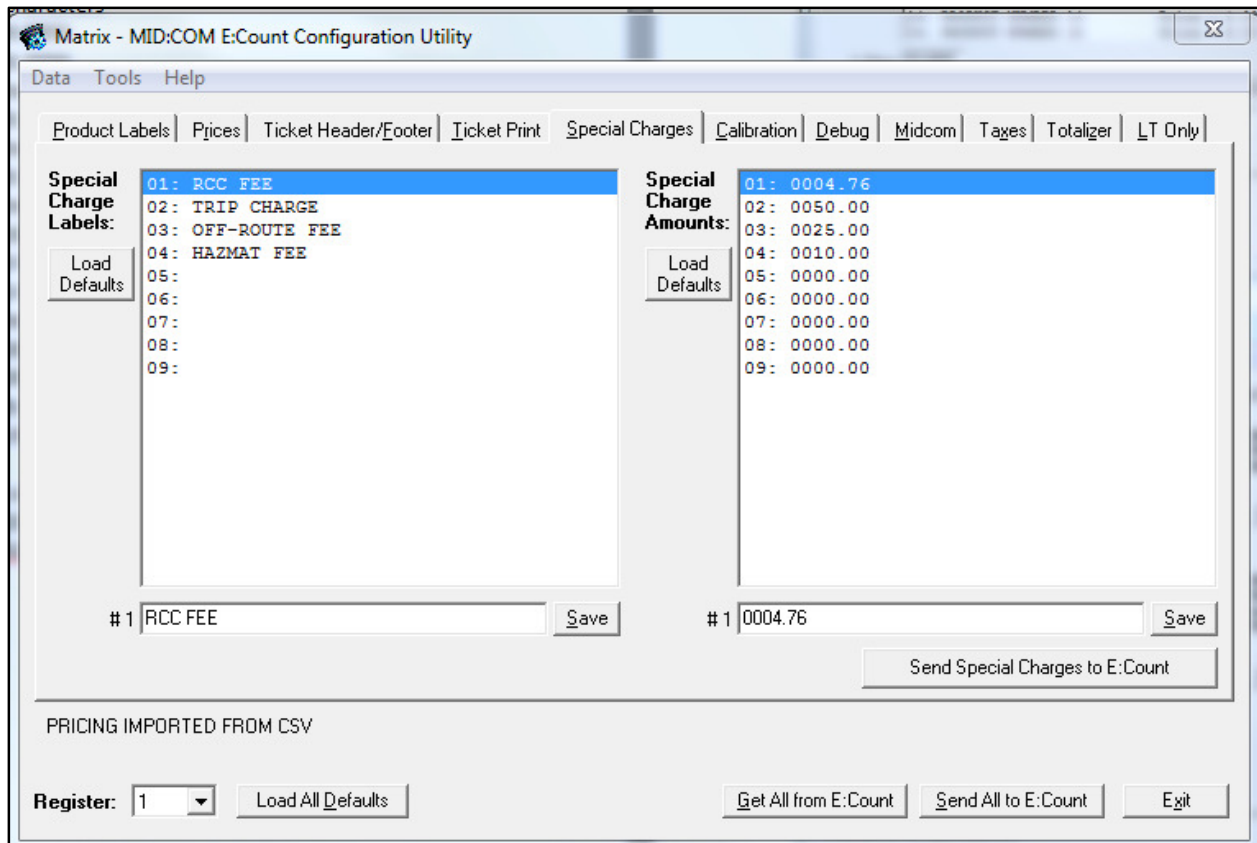


Figure 29. Special Charges Tab for CSV File

THISFEEAMOUNT

Fee Amount from \$0000.00 (no fee) to \$9999.99.

Only the first 9 Fee Amounts (in the first 9 Product Records in the CSV File) will be used. The Fee Amounts in Product Records 10-99 are ignored. "DO NOT USE" is exported in records 10-99.

	A	B	C	D	E	F	G	H	I	J	K	L	M	N	O	P	Q	R
1	PRODUCT	DESCRIPTION	PRICE	TAX1RATE	TAX1TYPE	TAX2RATE	TAX2TYPE	DISCOUNT	DISCOUNT	DISCOUNT	FEE1INDE	FEE2INDE	FEESTAXA	EXTRALAB	EXTRALAB	THISFEEA	THISXTRALABEL	
2	1	PRODUCT	0	0 %		0 %		0 %		0	0	0	N	0	0	1111.11		
3	2	PRODUCT	0	0 %		0 %		0 %		0	0	0	N	0	0	0		
4	3	PRODUCT	0	0 %		0 %		0 %		0	0	0	N	0	0	0		
5	4	PRODUCT	0	0 %		0 %		0 %		0	0	0	N	0	0	0		
6	5	PRODUCT	0	0 %		0 %		0 %		0	0	0	N	0	0	0		
7	6	PRODUCT	0	0 %		0 %		0 %		0	0	0	N	0	0	0		
8	7	PRODUCT	0	0 %		0 %		0 %		0	0	0	N	0	0	0		
9	8	PRODUCT	0	0 %		0 %		0 %		0	0	0	N	0	0	0		
10	9	PRODUCT	0	0 %		0 %		0 %		0	0	0	N	0	0	9999.99		
11	10	PRODUCT	0	0 %		0 %		0 %		0	0	0	N	0	0	0	DO NOT USE	

Figure 30. CSV File in Excel 2010

```

1  PRODUCTCODE, DESCRIPTION, PRICE, TAX1RATE, TAX1TYPE, TAX2RATE, TAX2TYPE, DISCOUNT, DISCOUNT, DISCOUNT, FEE1INDE, FEE2INDE, FEESTAXA, EXTRALAB, EXTRALAB, THISFEEA, THISXTRALABEL
2  01, PRODUCT PROPANE, ,00.0000,00.0000, $,00.0000, $,00.0000, $,00,0,0,N,0,0,0000.00,
3  02, PRODUCT FUEL OIL/DIESEL, ,00.0000,00.0000, $,00.0000, $,00.0000, $,00,0,0,N,0,0,0000.00,
4  03, PRODUCT GASOLINE, ,00.0000,00.0000, $,00.0000, $,00.0000, $,00,0,0,N,0,0,0000.00,
5  04, PRODUCT LUBE OIL, ,00.0000,00.0000, $,00.0000, $,00.0000, $,00,0,0,N,0,0,0000.00,
6  05, PRODUCT METHANOL, ,00.0000,00.0000, $,00.0000, $,00.0000, $,00,0,0,N,0,0,0000.00,
7  06, PRODUCT ANHYDROUS AMMONIA,00.0000,00.0000, $,00.0000, $,00.0000, $,00,0,0,N,0,0,0000.00,
8  07, PRODUCT JET-A FUEL, ,00.0000,00.0000, $,00.0000, $,00.0000, $,00,0,0,N,0,0,0000.00,
9  08, PRODUCT JET-B FUEL, ,00.0000,00.0000, $,00.0000, $,00.0000, $,00,0,0,N,0,0,0000.00,
10 09, PRODUCT ETHANOL, ,00.0000,00.0000, $,00.0000, $,00.0000, $,00,0,0,N,0,0,0000.00,
11 10, PRODUCT NUMBER 10, ,00.0000,00.0000, $,00.0000, $,00.0000, $,00,0,0,N,0,0,DO NOT USE,
12 11, PRODUCT NUMBER 11, ,00.0000,00.0000, $,00.0000, $,00.0000, $,00,0,0,N,0,0,DO NOT USE,
13 12, PRODUCT NUMBER 12, ,00.0000,00.0000, $,00.0000, $,00.0000, $,00,0,0,N,0,0,DO NOT USE,
14 13, PRODUCT NUMBER 13, ,00.0000,00.0000, $,00.0000, $,00.0000, $,00,0,0,N,0,0,DO NOT USE,
15 14, PRODUCT NUMBER 14, ,00.0000,00.0000, $,00.0000, $,00.0000, $,00,0,0,N,0,0,DO NOT USE,
16 15, PRODUCT NUMBER 15, ,00.0000,00.0000, $,00.0000, $,00.0000, $,00,0,0,N,0,0,DO NOT USE,
17 16, PRODUCT NUMBER 16, ,00.0000,00.0000, $,00.0000, $,00.0000, $,00,0,0,N,0,0,DO NOT USE.

```

Figure 31. CSV File in Text Editor

	A	B	C	D	E	F	G	H	I	J	K	L	M	N	O	P	Q	R
1	PRODUCT	DESCRIPTION	PRICE	TAX1RATE	TAX1TYPE	TAX2RATE	TAX2TYPE	DISCOUNT	DISCOUNT	DISCOUNT	FEE1INDE	FEE2INDE	FEESTAXA	EXTRALAB	EXTRALAB	THISFEEA	THISXTRALABEL	
2	1	PRODUCT	0	0 %		0 %		0 %		0	0	0	N	0	0	0		
3	2	PRODUCT	0	0 %		0 %		0 %		0	0	0	N	0	0	0		
4	3	PRODUCT	0	0 %		0 %		0 %		0	0	0	N	0	0	0		
5	4	PRODUCT	0	0 %		0 %		0 %		0	0	0	N	0	0	0		
6	5	PRODUCT	0	0 %		0 %		0 %		0	0	0	N	0	0	0		
7	6	PRODUCT	0	0 %		0 %		0 %		0	0	0	N	0	0	0		
8	7	PRODUCT	0	0 %		0 %		0 %		0	0	0	N	0	0	0		
9	8	PRODUCT	0	0 %		0 %		0 %		0	0	0	N	0	0	0		
10	9	PRODUCT	0	0 %		0 %		0 %		0	0	0	N	0	0	0		
11	10	PRODUCT	0	0 %		0 %		0 %		0	0	0	N	0	0	0	DO NOT USE	
12	11	PRODUCT	0	0 %		0 %		0 %		0	0	0	N	0	0	0	DO NOT USE	

Figure 32. CSV File in Excel 2003

INDEX

About Matrix.....	16	Load Defaults - Special	
AIRSEN.....	38, 40	Charges and Special Charge	
Calibration		Labels.....	26
Menu.....	36	Load Defaults - Ticket	
Screw.....	36	Configuration.....	24
Calibration Bolt.....	29, 38	Load Defaults - Ticket Header	
Calibration Data.....	13, 29	22
Calibration Factor.....	27, 31	Load from File.....	13
Calibration Factors.....	27, 28, 29	Matrix Help.....	16
Calibration Tab.....	27	Midcom Matrix Shortcut.....	12
Compensation Table.....	28	Minimum Requirements.....	7
Compensation Table Value.....	28	Options.....	15, 34
Data.....	13	PCM.....	18, 19, 22, 24, 26, 29, 33, 34, 41
Data Menu.....	14	Power Control Module	18, 19, 22, 24,
Default Printer.....	35	26, 29, 33, 34, 39, 41	
Delivery		Preset Volume.....	36
Menu.....	36	Price.....	19, 20, 40
Mode.....	36	print a report.....	35
Delivery Ticket.....	36	Print Data.....	15, 35
Discount.....	19, 20, 40	Product Code.....	36
Dwell Factor.....	28	Product Description.....	17, 18
Exit.....	13, 14, 39	Product Description To Print	
Footer.....	21	for a Specific Product.....	18
Get All from E:Count.....	13	Product Label.....	12, 17
Get Calibration Data from the		Product Label Configuration..	12
E:Count.....	29	Product Labels.....	13
Help.....	13	Product Labels Tab.....	17
Help Menu.....	16	Product Prices.....	13
Hose Packing.....	39, 40	Proving.....	29
installation.....	8	Register Selection.....	13, 33
installation folder.....	10	Sample Ticket.....	21, 24
License Agreement.....	9	Sample Ticket Header.....	21
Load All Defaults.....	13, 14	Save to File.....	13, 14
Load Default Tax Setup.....	32	Selected Product Descriptions	
Load Defaults - Calibration		18
Factor, Dwell Factor,		Send All to E:Count.....	13
Compensation Table.....	28	Send Calibration Data to	
Load Defaults - Product		E:Count.....	29
Labels and Product		Send Header and Footer.....	22
Descriptions.....	18	Send Header and Footer to	
Load Defaults - Product		E:Count.....	22
Pricing.....	20	Send Product Labels to	
		E:Count.....	18

Send Product Pricing to	
E:Count.....	19
Send Special Charges to	
E:Count.....	26
Send Tax Setup to E:Count.....	32
Send Ticket Configuration to	
E:Count.....	24
shortcut	12
Software End-user License	
Agreement	9
Special Charge Amount	26
Special Charge Amounts.....	26
Special Charge Label.....	25
Special Charge Labels	25
Special Charges.....	13, 19, 20, 26
Special Charges Tab.....	25
Subtotal Tax.....	31
Tax 1 Subject to Tax 2.....	31

Tax Labels.....	31
Tax Rate	19
Tax Rates.....	19
Tax Type	19
Tax Types.....	19
Taxes Tab.....	31
Temperature Compensation.....	36
Ticket Configuration.....	13, 21, 24
Ticket Configuration default	24
Ticket Configuration Tab.....	23
Ticket Footer	13, 21, 22, 23, 24
Ticket Header	13, 21, 22, 23, 24
Tools.....	13
Tools Menu.....	15, 34
uncompensated	28
View Log File.....	15

